

CODES FOR LUNG CANCER SCREENING

REIMBURSEMENT CODES

CPT CODE	DESCRIPTION
G0296	Visit to determine LDCT eligibility (shared decision-making).
71271	Computed tomography, thorax, low-dose lung cancer screening without contrast material(s). PA is required.

MODIFIERS

CODE	DESCRIPTION
TC	Technical component.
25	Significant, separately identifiable evaluation and management service by the same physician on the same day of the procedure or other service.
26	Professional component.
59	Distinct procedural service (if the CT scan is performed in conjunction with another procedure).
95	Synchronous telemedicine service rendered via a real-time interactive studio and video telecommunications system.

CODES TO DOCUMENT PATIENT ELIGIBILITY

ICD-10 CODE	DESCRIPTION
Z87.891	Former smokers (personal history of nicotine dependence).
F17.210	Nicotine dependence, cigarettes, uncomplicated.
F17.211	Nicotine dependence, cigarettes, in remission.
F17.213	Nicotine dependence, cigarettes, with withdrawal.
F17.218	Nicotine dependence, cigarettes, with other nicotine-induced disorders.
F17.219	Nicotine dependence, cigarettes, with unspecified nicotine-induced disorders.

SOURCES:

CENTERS FOR MEDICARE AND MEDICAID SERVICES:

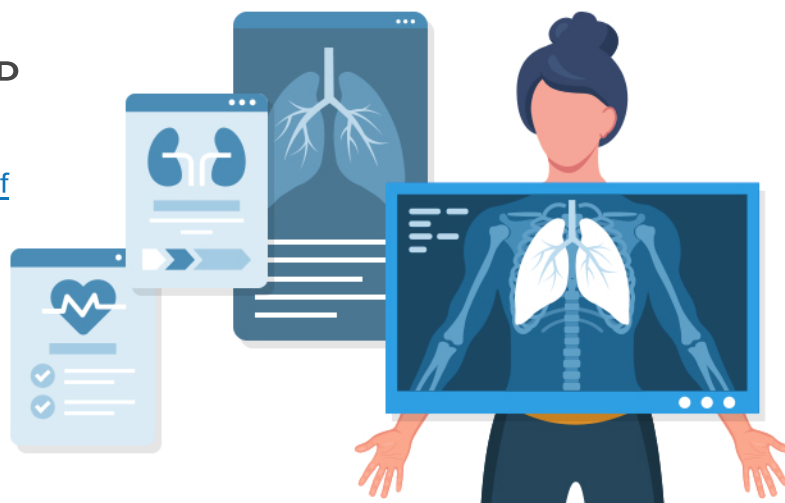
<https://www.cms.gov/regulations-and-guidance/guidance/manuals/downloads/clm104c18pdf.pdf>

AMERICAN COLLEGE OF RADIOLOGY:

<https://www.acr.org/Clinical-Resources/Clinical-Tools-and-Reference/Screening-Resources/lung-cancer-resources>

MD CLARITY:

<https://www.mdclarity.com/cpt-code/71271>



OKLAHOMA
Health Care Authority



ADDRESS
4345 N. Lincoln Blvd.
Oklahoma City, OK 73105



WEBSITES
oklahoma.gov/ohca
mysoonercare.org



PHONE
Admin: 405-522-7300
Helpline: 800-987-7767