

LONG TERM SERVICES & SUPPORTS

March 24, 2021



GOOD MORNING!

DAVID WARD

Manager, Long Term Services & Supports (OHCA)

Money Follows the Person Living Choice Demonstration

**Created from the 2005 Deficit
Reduction Act**

- Rebalance and restructure state's long-term care systems.
- Transition qualified members from the institution back into the community.
- Centers for Medicare and Medicaid Services award the grant.
- 42 states and The District of Columbia currently operate an MFP program.



*President George W.
Bush Signing the
Deficit Reduction Act*

Oklahoma's Living Choice Demonstration



- Oklahoma received the MFP Demonstration Grant Award in 2007.
- Began transitioning members in 2009.
- Provides Oklahomans more options to manage their health care needs in the comfort of their own home.
- To date, Oklahoma has transitioned more than 820 members.
- Awarded the MFP-Tribal Initiative in 2015.

Money Follows the Person Living Choice Demonstration

Re-Authorizations

- On January 24, 2019, the Medicaid Extenders Act was signed into law.
- On December 27, 2020, the Consolidated Appropriations Act, 2021, was signed into law

Populations Served

- Physically Disabled - ages 19 and older (337)
- Intellectually Disabled - 2010-15 (313)
- Older Population - ages 65 and older (170)
- Psychiatric Residential Treatment Facility – 2018 (1)

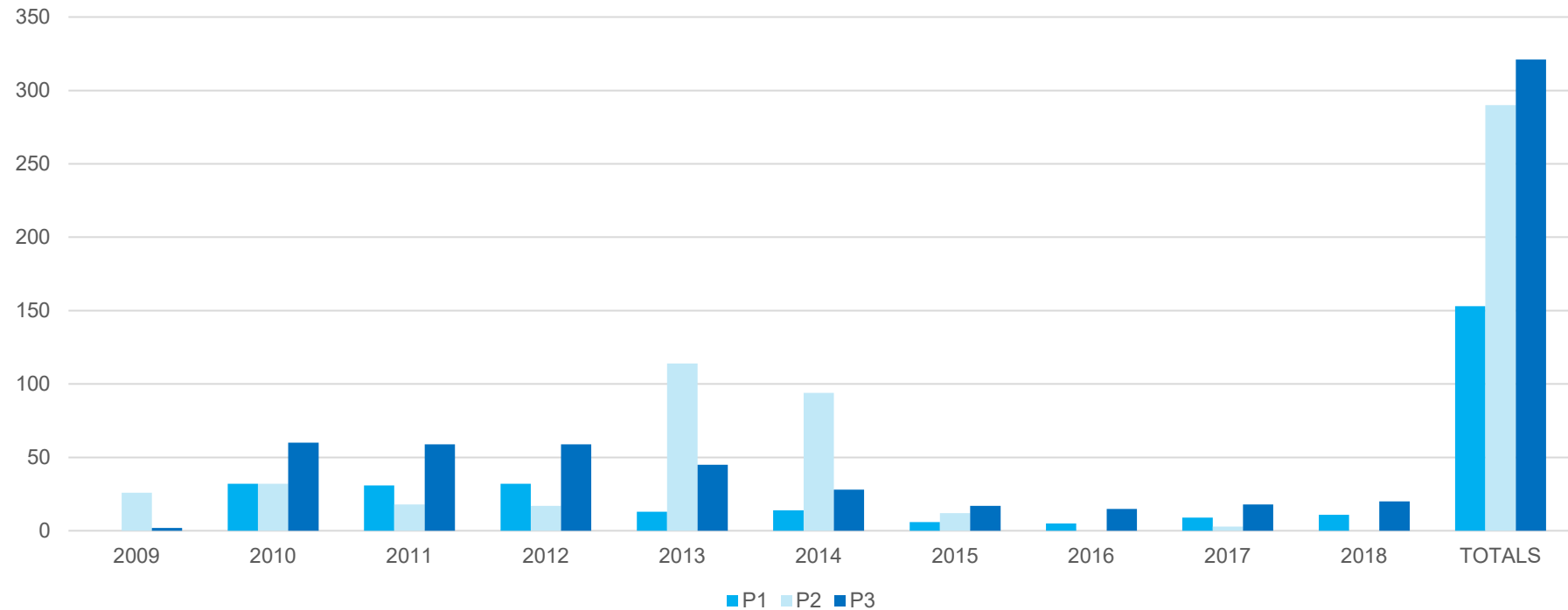


*Gregory is a SoonerCare Member
on Living Choice*

Over 800 Oklahomans Transitioned To Communities

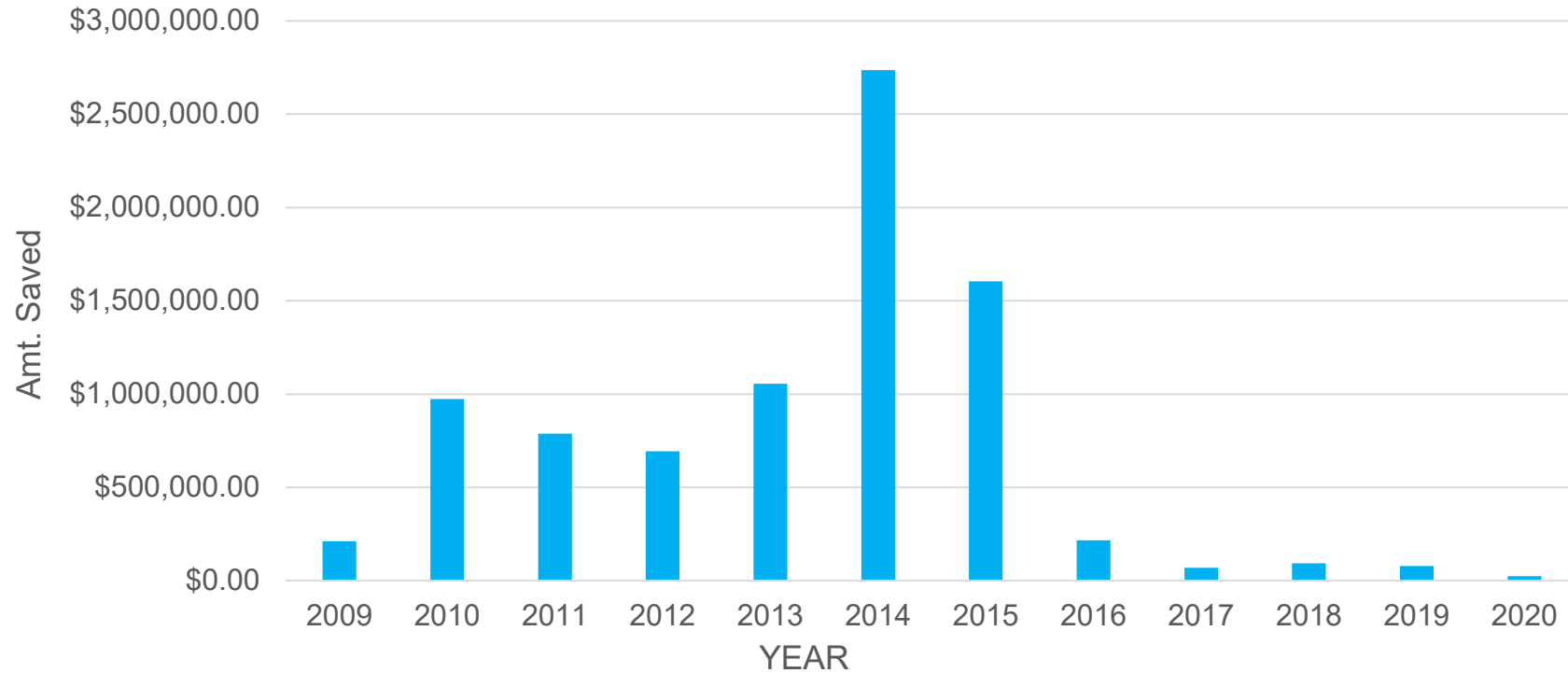


LIVING CHOICE MEMBERS



Rebalancing Funds

Over \$8.5 million saved



The report indicates average monthly expenditures per beneficiary declined by approximately \$1,840 (23%), equating to a mean cost-savings of \$22,080 following the first transition year.

Source - The 2017 MFP Rebalancing Demonstration Report to Congress

MFP Eligibility Requirements

- Medicaid eligible.
- Reside in an institution for 60 consecutive days.¹
- One day of stay paid by Medicaid.
- Must be willing to actively participate in transition.

Services at a Glance

- Assisted Living services
- Case management
- Home-Delivered Meals
- Personal care
- Self-Direction services
- Skilled nursing
- Therapy Services
- Transition funds available for housing needs
 - A one-time allotment of up to \$2,400.00.

Demonstration Period



Member will spend 365 days in the Living Choice Demonstration.



On day 366...



ADvantage Waiver²

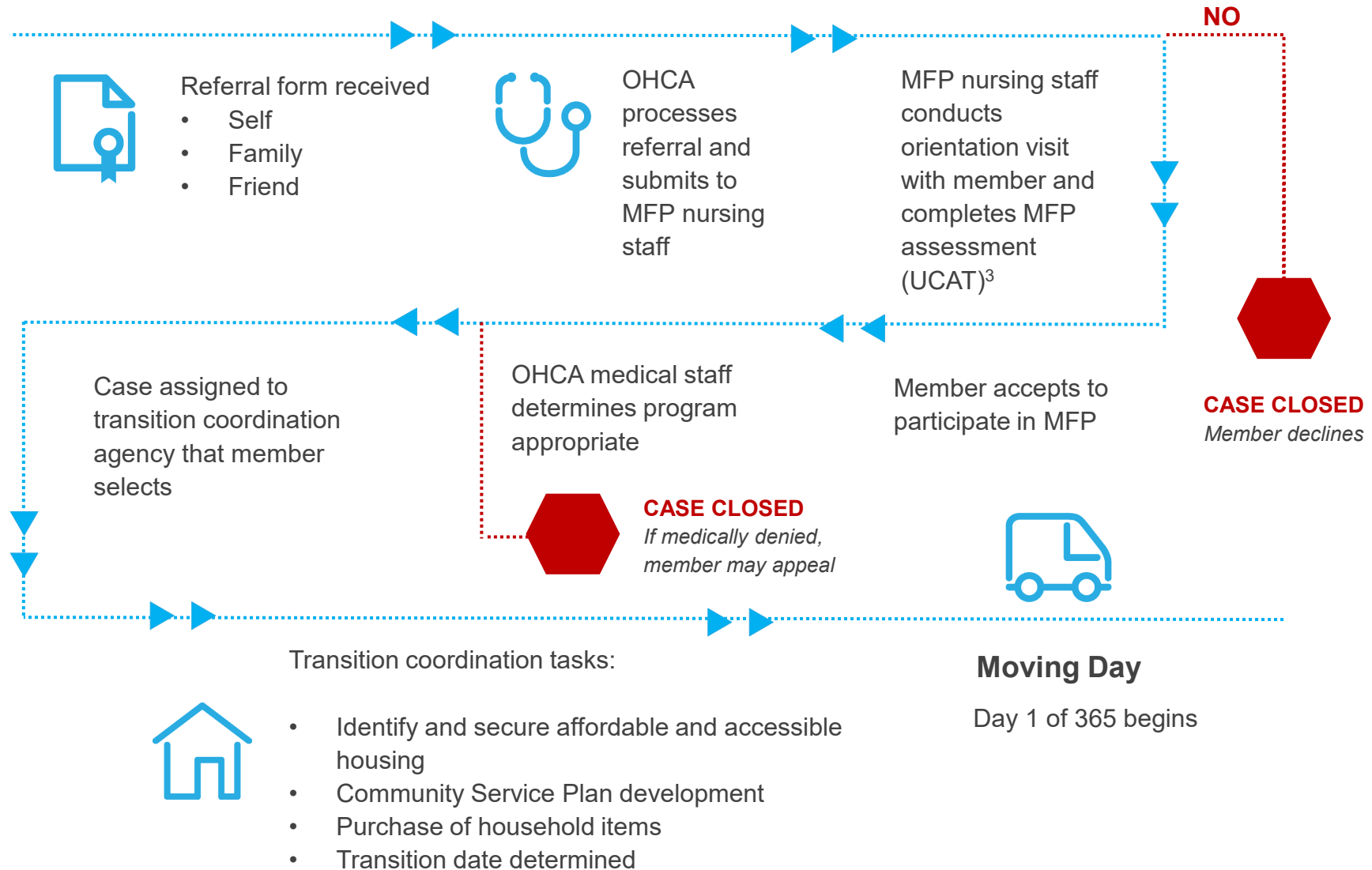
- Physically disabled (19-64)
- Older persons (65+)

It All Begins With A Referral

The screenshot shows a web browser window with the URL <http://www.okhca.org/ReferralHome.aspx?ref=LC>. The page title is "Long-Term Care Waiver Operations". On the left is a navigation menu with links: "What Is SoonerCare?", "Online Enrollment", "Programs", "Benefits", "Policies & Rules", "Forms", "Stay Healthy!", "Help", and "Updates". The main content area is a form titled "Create New Referral Case: Living Choice". The form is divided into several sections: "Personal Information" (Last Name, First Name, Medicaid Number, DOB, Sex, Phone, Current Address, SSN, City, State, Zip, County, and a section for legal guardian/power of attorney), "Family Contact Information" (First Name, Last Name, Phone, Relationship), "Institutional Information: (Living Choice Only)" (Name of Institution, Room, Address, City, State, Zip, Provider ID, and Personal Physician's Information), and "Referral Information" (How did you hear about the program, Person making referral, First Name, Last Name, Phone, Relationship, and a field for "Other" if applicable). The form includes various input fields, dropdown menus, and checkboxes.

<http://www.okhca.org/LTSSreferral>

MFP TRANSITION PROCESS



CAPACITY BUILDING

Supplemental funding to current MFP states



- Identifying new strategies to increase MFP community transitions;
- Strengthen our community partnerships;
- Develop and implement a statewide training where members and families can gain information on the MFP program

Oklahoma is one of 33 states eligible to receive funding



- Provider and direct service worker recruitment, education, training, technical assistance, and quality improvement activities, including training people with disabilities to become direct service workers;
- Building Medicaid-housing partnerships to facilitate access to affordable and accessible housing for Medicaid beneficiaries with disabilities and older adults

STAKEHOLDER

Feedback/input

- Additional concepts and priorities for using the available funding
- Recommendations for additional ways the supplemental funding can be used to accelerate long-term care HCBS system transformation design and implementation

Long Term Services and Supports

Oklahoma Health Care Authority

4345 N. Lincoln Blvd

OKC, OK 73105

888-287-2443

<http://www.okhca.org/livingchoice>

Email: info@oklivingchoice.org

PROGRAM CONTACTS

Essence McKnight

Essence.McKnight@okhca.org

405-522-7682

Russell Coker

Russell.Coker@okhca.org

405-522-7053