

Community Based Services

Providing intake and probation in 73 counties, custody and parole services in all 77 counties.

		10,803	3,194	2,476	838
		Referrals Received	Youth in Detention	Youth in Supervision & Probation	Youth in Custody
AGE	Under 14	1,937	287	455	28
	14 years old	1,559	443	324	40
	15 years old	2,082	666	473	81
	16 years old	2,418	805	539	91
	17 years old	2,627	968	670	175
	18 years old	172	25	64	11
	18+ years old	8	0	2	0
GENDER	Female	2,999	659	618	48
	Male	7,804	2,535	1,858	371
RACE	Black	2,396	986	239	117
	White	5,257	1,207	1,445	171
	Hispanic	1,042	394	213	48
	Other Race	191	607	579	83
CRIME	Warrants	404	1,463	43	396
	Status Offenses	1,390	87	420	285
	Misdemeanors	5,188	1,521	2,729	257
	Felony	3,805	2,122	1,1499	334

4,337
Intakes
Completed

1,372
Decline
to File

439
Informal
Adjustments

883
Deferred
Filings

\$132,927.88
Restitution
Collected

302
Youth Diverted to
Community
Programs

9,540
Training Hours
Earned

14
Tribal
Liaisons

500
Group Home
Residents

168 Days
Avg. Length of
Stay in Group
Homes

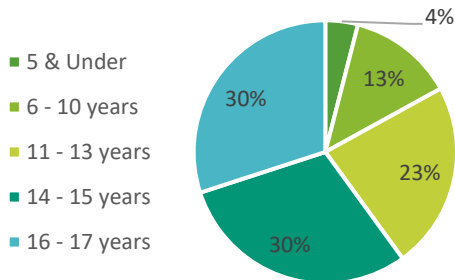
Standards for Prevention & System Improvement

Monitors and supports quality community-based prevention, treatment, and reintegration services for youth.

43,431

Shelter Nights*

*OJA contracts with 21 youth shelters across the state. Children served may be in DHS custody, OJA custody, or from within the community.



49,018*

Students Served by Botvin LifeSkills Training

*Duplicated count

158 Hours

Training, Technical Assistance, and Community Linkages

237 Events

Training, Technical Assistance, and Community Linkages

7

Deinstitutionalization of Status Offender Violations

9

Separation Violations

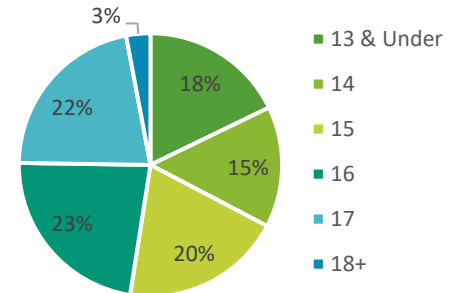
10

Jail Removal Violations

1,835

Children & Families Served by the First Time Offender Program*

*A 14-hour course which requires youth to attend with their caregiver.



1,189

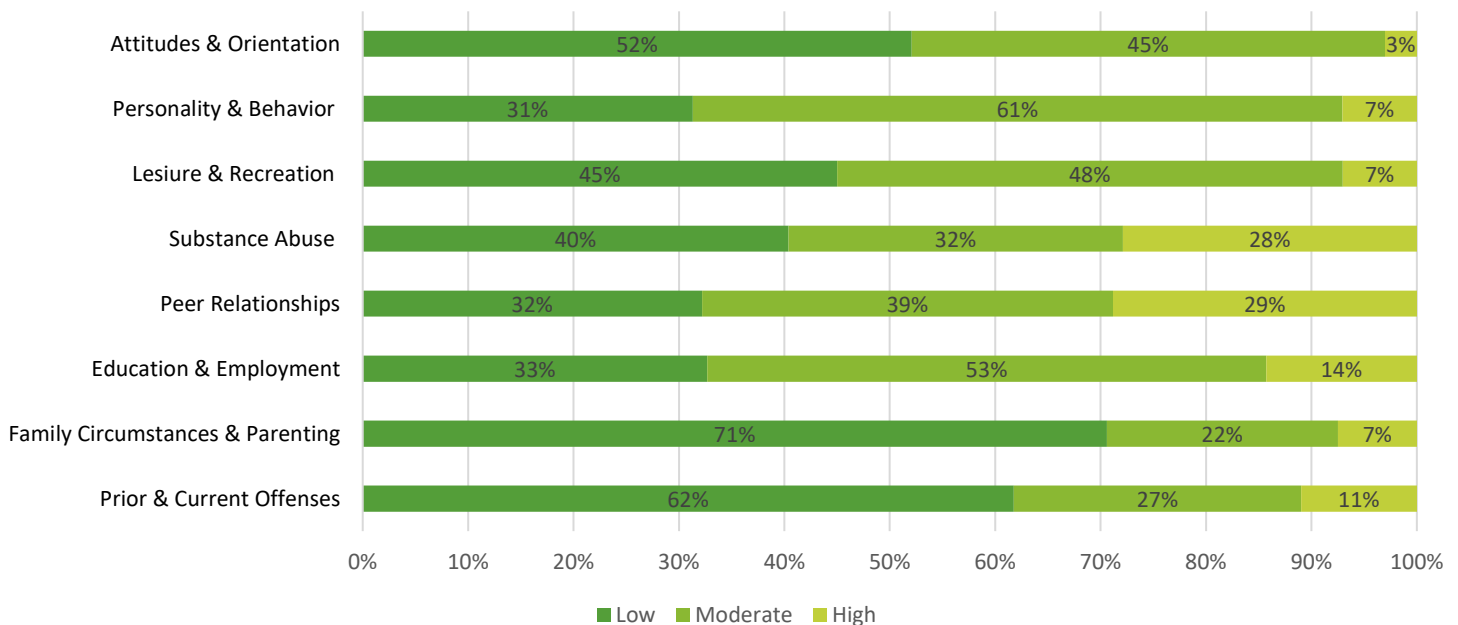
System Involved Children Served through Community At-Risk Services*

*Evidence-based outpatient therapy

4,476

Youth Level of Service /Case Management Inventory™ (YLS/CMI) Assessments Completed*

*YLS/CMI is an evidence-based instrument that measures risk and need factors in 8 domains providing an overall score that indicates a youth's risk for recidivism. The levels of degree range from low (would likely not contribute) to very high (would likely contribute).



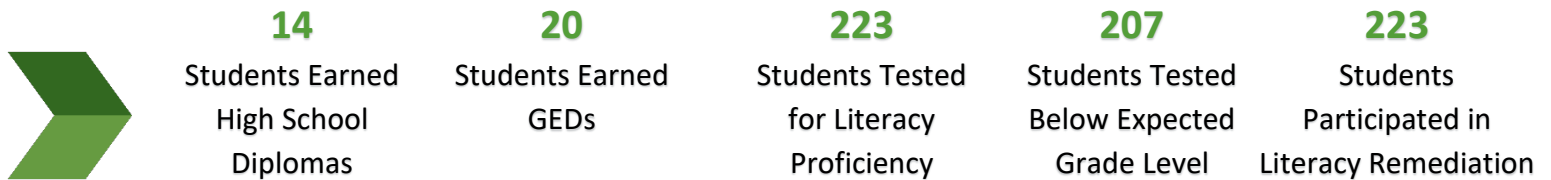
Residential Placement Support

Responsible for the care of children in secure care settings operated by OJA.

120	38	14	767	99%	98.7%
Unique Residents	Residents Paroled	Residents Bridged	Family Visits	ACA Mandatory Compliance (COJC)	ACA Mandatory Compliance (SWOJC)

Education Data

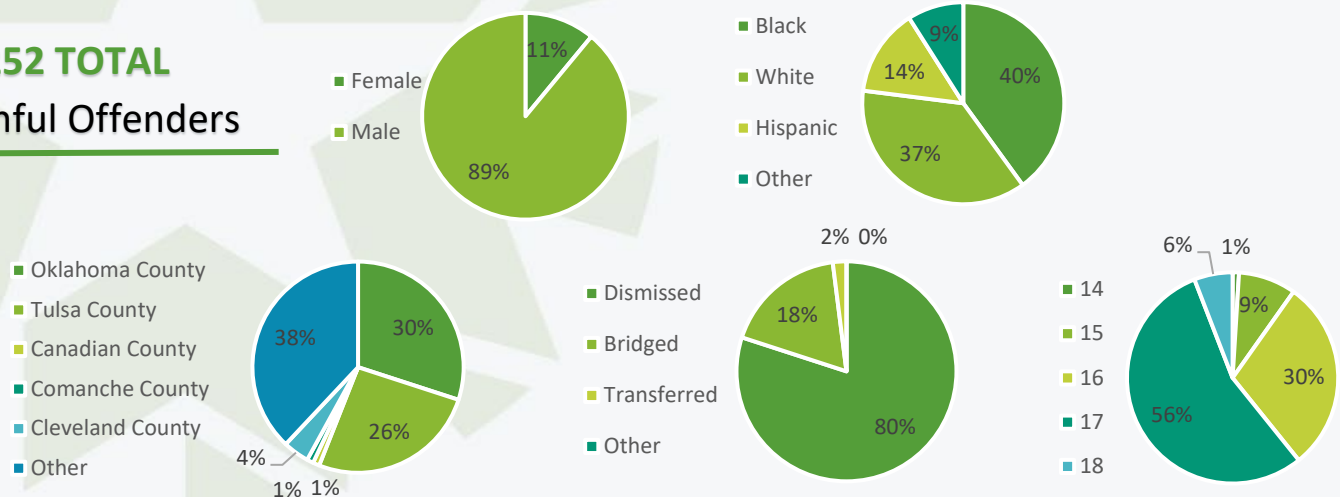
The Oklahoma Youth Academy Charter School (OYACS) provides educational services to children in secure care settings.



Youthful Offender Data

Charging a child as a youthful offender allows the State to ensure public safety by holding children accountable for serious crimes while affording courts methods of rehabilitation for those children in the juvenile justice system through the custody or supervision of the Office of Juvenile Affairs.

252 TOTAL Youthful Offenders



Looking Forward

In 2019, the Office of Juvenile Affairs will focus on the following;

- Expand GPS Program to include real-time monitoring for residential youth on pass or upon initial release and increased use as an alternative to detention.
- Invest in career tech equipment including a driving simulator, welding materials, and auto mechanic equipment.
- Increase available therapeutic and traditional foster homes.
- Create positions specific to workforce development to assist youth in preparing for and entering the workforce.
- Establish equalization among group home rates.