

## Community Based Services

Providing intake and probation in 73 counties, custody and parole services in all 77 counties.

		<b>11,998</b>	<b>3,436</b>	<b>2,593</b>	<b>944</b>
		Referrals Received	Youth in Detention	Youth in Supervision & Probation	Youth in Custody
AGE	Under 14	1,921	241	458	17
	14 years old	1,692	461	363	49
	15 years old	2,525	761	512	105
	16 years old	2,751	931	597	100
	17 years old	2,934	1,017	652	194
	18 years old	163	25	69	16
	18+ years old	12	0	1	0
GENDER	Female	3,308	769	669	76
	Male	8,690	2,667	1,924	396
RACE	Black	2,740	1,109	220	156
	White	5,710	1,321	1,519	173
	Hispanic	1,162	423	227	48
	Other Race	202	583	627	95
CRIME	Warrants	361	1,501	45	570
	Status Offenses	1,323	81	420	261
	Misdemeanors	5,717	1,645	2,928	316
	Felony	4,583	2,452	1,671	414

<b>4,408</b> Intakes Completed	<b>1,149</b> Decline to File	<b>483</b> Informal Adjustments	<b>781</b> Deferred Filings	<b>\$377,905.65</b> Restitution Collected
<b>322</b> Youth Diverted to Community Programs	<b>11,241</b> Training Hours Earned	<b>14</b> Tribal Liaisons	<b>524</b> Group Home Residents	<b>184 Days</b> Avg. Length of Stay in Group Homes

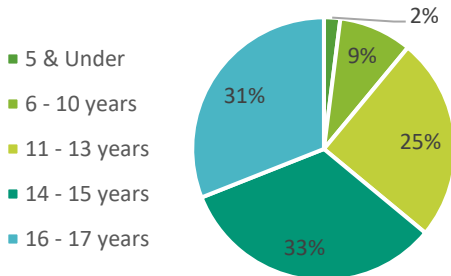
## Standards for Prevention & System Improvement

Monitors and supports quality community-based prevention, treatment, and reintegration services for youth.

**42,169**

### Shelter Nights\*

\*OJA contracts with 21 youth shelters across the state. Children served may be in DHS custody, OJA custody, or from within the community.



**44,760\***

### Students Served by Botvin Lifeskills Training

\*Duplicated count

**161 Hours**

### Training, Technical Assistance, and Community Linkages

**224 Events**

### Training, Technical Assistance, and Community Linkages

**12**

### Deinstitutionalization of Status Offender Violations

**0**

### Separation Violations

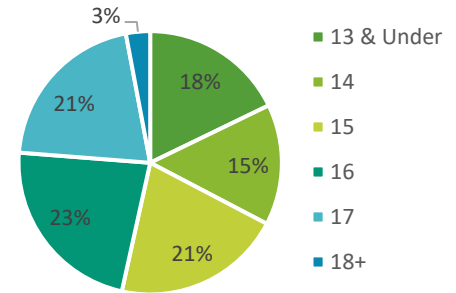
**17**

### Jail Removal Violations

**2,054**

### Children & Families Served by the First Time Offender Program\*

\*A 14-hour course which requires youth to attend with their caregiver.



**1,303**

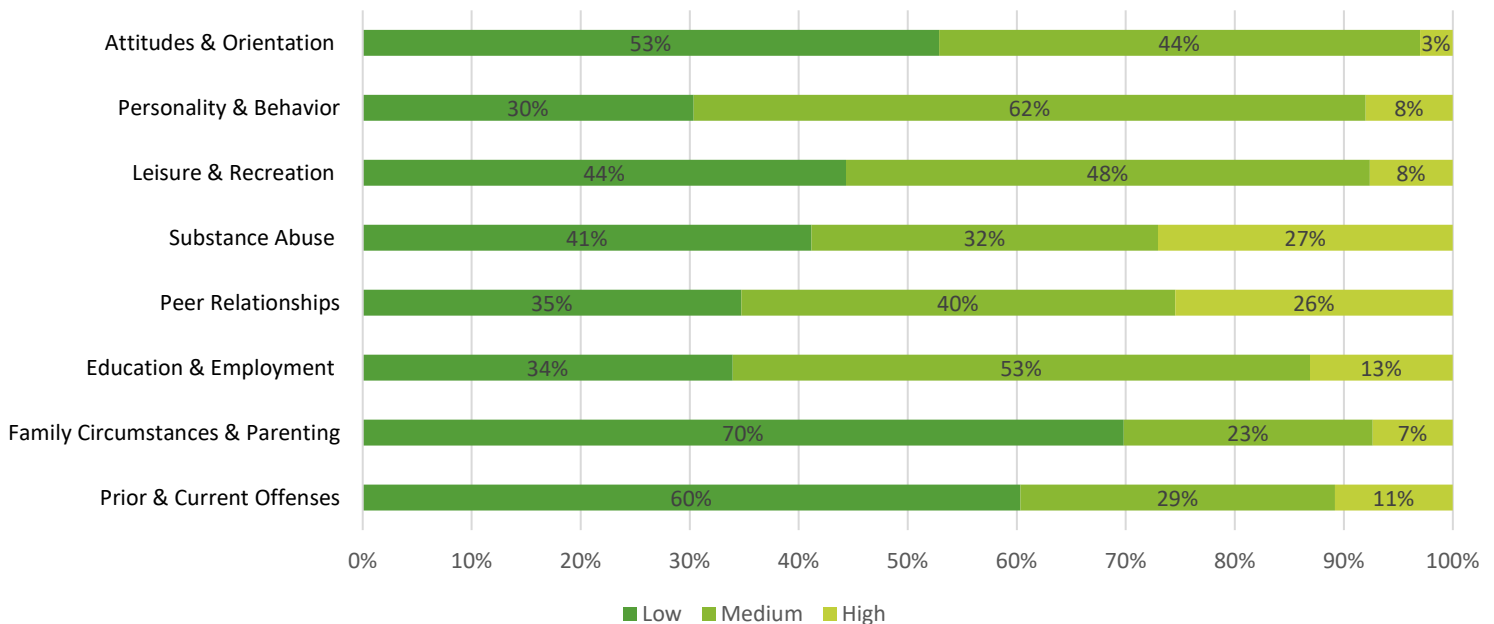
### System Involved Children Served through Community At-Risk Services\*

\*Evidence-based outpatient therapy

**4,476**

### Youth Level of Service /Case Management Inventory™ (YLS/CMI) Assessments Completed\*

\*YLS/CMI is an evidence-based instrument that measures risk and need factors in 8 domains providing an overall score that indicates a youth's risk for recidivism. The levels of degree range from low (would likely not contribute) to very high (would likely contribute).



## Residential Placement Support

Responsible for the care of children in secure care settings operated by OJA.



**127**  
Unique  
Residents

**41**  
Residents  
Paroled

**7**  
Residents  
Bridged

**784**  
Family Visits



## Education Data

The Oklahoma Youth Academy Charter School (OYACS) provides educational services to children in secure care settings.

**29**  
Students Earned  
High School  
Diplomas

**23**  
Students Earned  
GEDs

**210**  
Students Tested  
for Literacy  
Proficiency

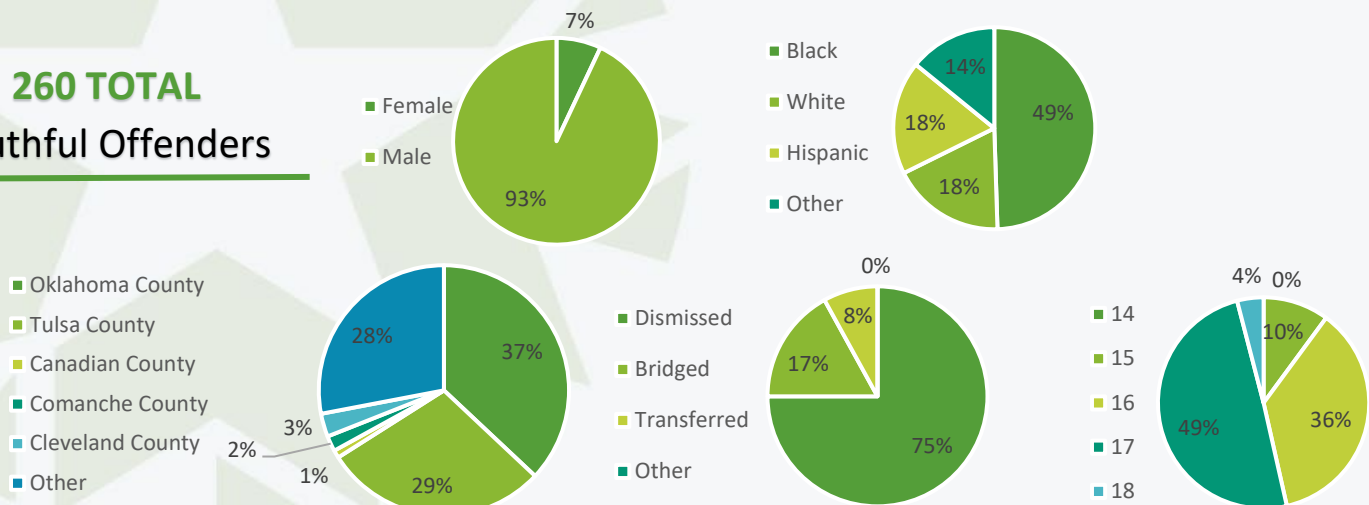
**197**  
Students Tested  
Below Expected  
Grade Level

**210**  
Students  
Participated in  
Literacy Remediation

## Youthful Offender Data

Charging a child as a youthful offender allows the State to ensure public safety by holding children accountable for serious crimes while affording courts methods of rehabilitation for those children in the juvenile justice system through the custody or supervision of the Office of Juvenile Affairs.

**260 TOTAL**  
Youthful Offenders



## Looking Forward

In 2018, the Office of Juvenile Affairs will focus on the following;

- Partnering with the Oklahoma State University to conduct a program evaluation of the First Time Offender Program (FTOP).
- Commence a new research project to retroactively study the longer-term impact of youth who complete FTOP as opposed to youth who do not receive prevention or diversion services.
- Utilizing technology to improve educational service delivery, including universal student access to sites like Edmentum and Odysseyware.
- Increase mobility of the OJA workforce by investing in low cost notebooks and communication devices to untie workers from their desks and offices.