

### Community Based Services

Providing intake and probation in 73 counties, custody and parole services in all 77 counties.

		9,072	2,392	1,894	685
		Referrals Received	Youth in Detention	Youth in Supervision & Probation	Youth in Custody
AGE	Under 14	1,670	174	358	45
	14 years old	1,417	329	307	81
	15 years old	1,830	522	358	153
	16 years old	1,960	610	440	172
	17 years old	2,043	715	343	164
	18 years old	146	42	58	52
	18+ years old	6	0	30	18
GENDER	Female	2,495	446	530	89
	Male	6,577	1,946	1,364	596
RACE	Black	2,680	1,008	254	258
	White	4,378	855	1,197	271
	Hispanic	958	284	204	73
	Other Race	1,056	245	239	83
CRIME	Warrants	769	994	27	3
	Status Offenses	719	58	76	26
	Misdemeanors	4,124	1,320	4,365	3,263
	Felony	2,539	1,787	4,631	4,989

**3,115**  
Intakes  
Completed

**2,147**  
Decline  
to File

**403**  
Informal  
Adjustments

**643**  
Deferred  
Filings

**\$78,064.22**  
Restitution  
Collected

**54,290**  
Training Hours  
Earned

**11**  
Tribal  
Liaisons

**391**  
Group Home  
Residents

**126 Days**  
Avg. Length of Stay in  
Group Homes

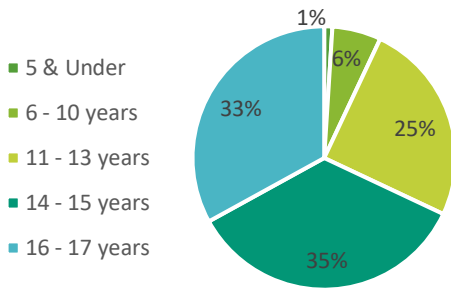
# Standards for Prevention & System Improvement

Monitors and supports quality community-based prevention, treatment, and reintegration services for youth.

**36,660**

## Shelter Nights\*

\*OJA contracts with 21 youth shelters across the state. Children served may be in DHS custody, OJA custody, or from within the community.



**213**

## Cultural and Lingual Services

**0**

## Deinstitutionalization of Status Offender Violations

**0**

## Separation Violations

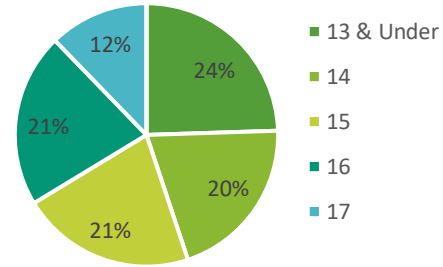
**5**

## Jail Removal Violations

**1,613**

## Children & Families Served by the First Time Offender Program\*

\*A 14-hour course which requires youth to attend with their caregiver.



**474**

## Youth Participating in Workforce Programs or Receiving HUB Supports

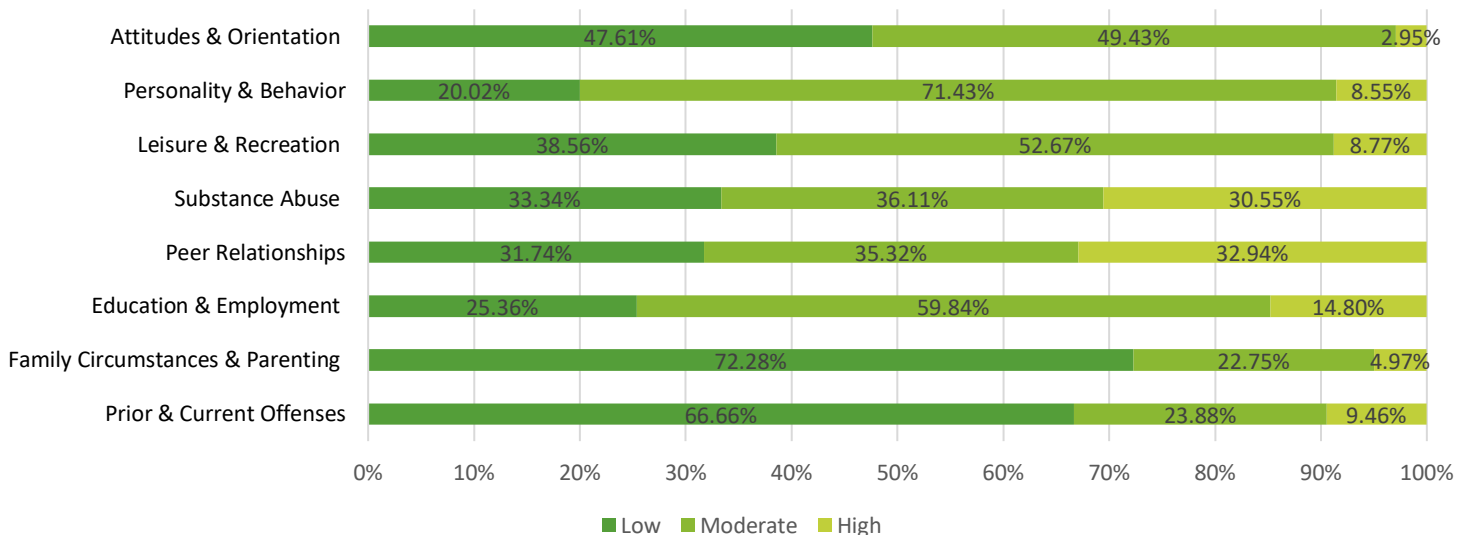
**59**

## Children Served through Juvenile Relapse Avoidance Project (JRAP)

**3,182**

## Youth Level of Service /Case Management Inventory™ (YLS/CMI) Assessments Completed\*

\*YLS/CMI is an evidence-based instrument that measures risk and need factors in 8 domains providing an overall score that indicates a youth's risk for recidivism. The levels of degree range from low (would likely not contribute) to very high (would likely contribute).



# Residential Placement Support

Responsible for the care of children in secure care settings operated by OJA.

<b>53</b>	<b>21</b>	<b>8</b>	<b>2,423</b>	<b>61%</b>	<b>100%</b>
Unique Residents	Residents Paroled	Residents Bridged	Family Visits	PbS Score	ACA Compliance

## Education Data

The Oklahoma Youth Academy Charter School (OYACS) provides educational services to children in secure care settings.

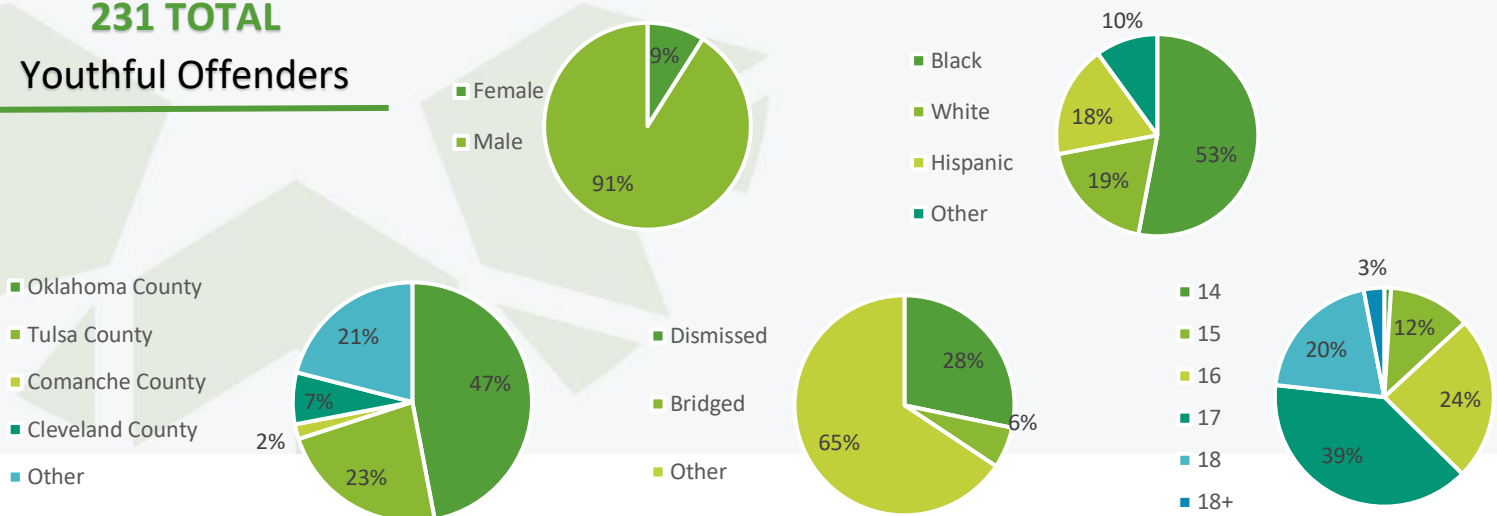
<b>13</b>	<b>3</b>	<b>94</b>	<b>83</b>	<b>94</b>
Students Earned High School Diplomas	Students Earned GEDs	Students Tested for Literacy Proficiency	Students Tested Below Expected Grade Level	Students Participated in Literacy Remediation

## Youthful Offender Data

Charging a child as a youthful offender allows the State to ensure public safety by holding children accountable for serious crimes while affording courts methods of rehabilitation for those children in the juvenile justice system through the custody or supervision of the Office of Juvenile Affairs.

**231 TOTAL**

### Youthful Offenders



## Looking Forward

In 2025, the Office of Juvenile Affairs will focus on the following;

- Developing a stable funding source for Functional Family Therapy (FFT) to all 77 counties.
- Implementing a systemic reentry model for statewide application.
- Promote recruitment and retention of secure-care treatment staff and local OJA field office staff.
- Expand career readiness services to students at Oklahoma Youth Academy Charter School.
- Increase wrap around services to youth and families through HUB referrals and workforce solutions.