

# Oklahoma Commission on Children and Youth (OCCY)

Parent Partnership Board (PPB)

2025-2026 Vision & Action Plan

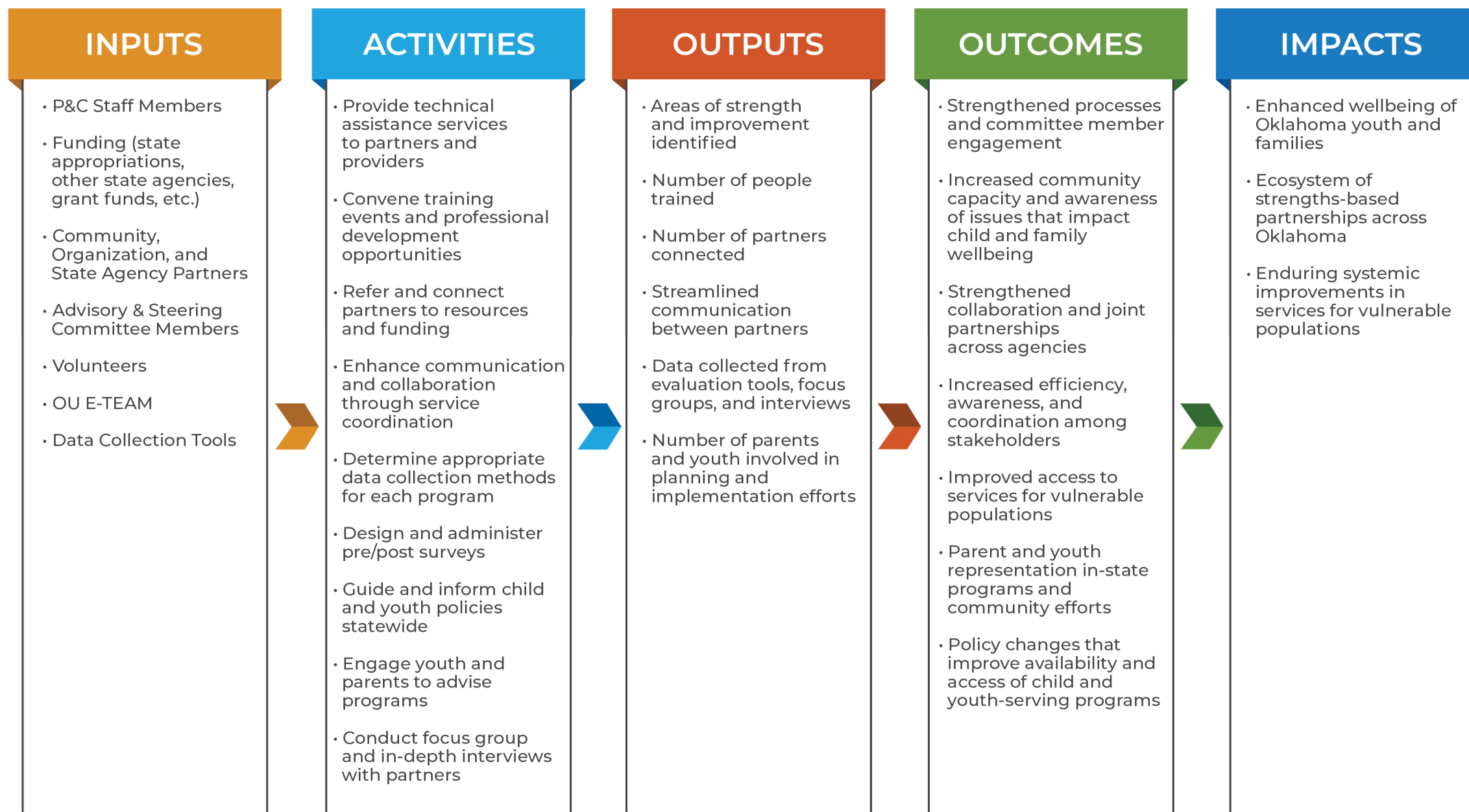


OKLAHOMA  
COMMISSION ON  
CHILDREN AND  
YOUTH

# Background and History

- In 1982, the Oklahoma legislature enacted House Bill 1468, establishing the Oklahoma Commission on Children and Youth (OCCY). Responding to the pressing need for reform, this legislative measure aimed to institute a robust framework for accountability and oversight within the state's child and youth service systems
- In 1990, the legislature established the Office of Planning and Coordination for Services to Children and Youth within OCCY. (10 O.S. § 601.6a.) A primary objective of the office is to facilitate collaboration between child serving state agencies, other public and private sector service providers, and stakeholders to address deficits in these systems effectively.
- The Children's Endowment Fund of Oklahoma (10 O.S. § 601.14) , established in 2019 and administered by the OCCY, supports innovative programs to improve child well-being and reduce adverse childhood experiences. To center the voices of those with lived experience, the Parent Partnership Board (PPB) was created to advise OCCY Commissioners and strengthen family-focused systems through parent leadership and engagement.

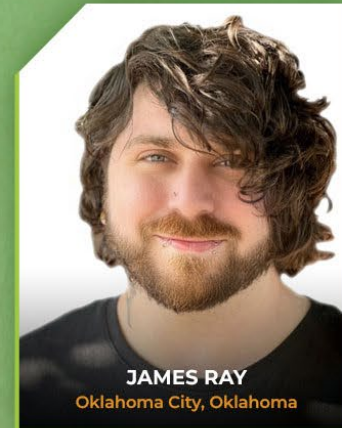
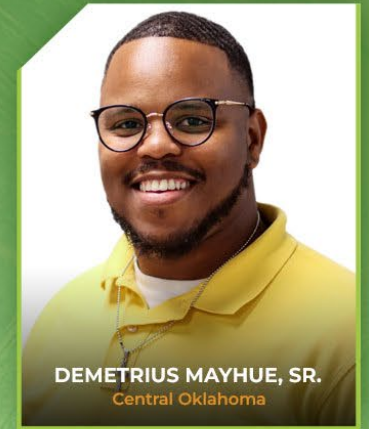




The Office of Planning and Coordination (P&C) dedicates itself to serving and improving the lives of Oklahoma's youth and families through joint planning and service coordination among stakeholders.



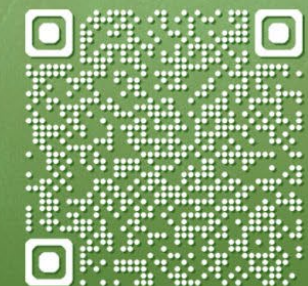
# OCCY PARENT PARTNERSHIP BOARD



OKLAHOMA  
COMMISSION ON  
CHILDREN AND  
YOUTH

[OKLAHOMA.GOV/OCCY/PARENTPARTNERSHIP](https://oklahoma.gov/occy/parentpartnership)

Scan Here



Learn More



# Mission, Vision & Core Values

Mission	Vision	Core Values
The Parent Partnership Board serves as a trusted partner to the Oklahoma Commission on Children and Youth, elevating the lived experiences of families to strengthen child-serving systems across the state.	A future where every child in Oklahoma thrives - supported by family-centered systems, shaped through authentic parent partnerships, bold innovation, and a shared commitment to lifelong well-being.	Family Voice Collaboration Transparency Innovation Integrity

- We believe the lived experiences of parents and caregivers are essential to shaping policies, programs, and systems.
- We build partnerships across communities and agencies to co-create family-centered solutions.
- We foster trust through open communication and accountability.
- We pursue fresh ideas and creative solutions to improve outcomes.
- We act with consistency, responsibility, and a deep commitment to children's well-being.



# Plan Development Process

The Board's 2025-2026 Vision & Action plan was shaped using multiples sources:

- 2025 Parent Partnership Board Annual Retreat & Strategic Planning Session
- 2025 Parent Partnership Board Retreat & Strategic Planning Survey & Report
- 2025 Parent Partnership Board Engagement Survey & Report
- SFY 25 OCCY Commission Activity & Output Reports
- Oklahoma Statute Children's Endowment Fund of Oklahoma (10 O.S. § 601.14)

Together these inputs ensure the plan reflects member voices, aligns with statutory responsibility and supports OCCY's mission.



# Strategic Actions

<b>ADVISE</b>  Serve as a trusted advisory resource to guide decision-making across child-serving systems.	<b>EDUCATE</b>  Advance family-centered policies and practices by educating partners through lived-experience-driven insights, storytelling, and engagement.
<b>COLLABORATE</b>  Cultivate collaborative relationships to strengthen systems and elevate family-centered practice.	<b>LEAD</b>  Champion family-centered change by leading efforts that elevate parent voice and improve child-serving systems.

# Action #1: Advise

## Key Activities:

- Provide regular recommendations, grounded in family voice and lived experience, to the Commission, Commission staff, and child-serving agencies on policies, programs, and practices that affect children and families.
- Share insights from our own lived experiences to inform systems change, and when possible, amplify additional parent perspectives through informal outreach or storytelling.
- Review and offer timely feedback on proposed initiatives, legislation, and regulations impacting child-serving systems.
- Facilitate ongoing communication and collaboration with Commission staff and child-serving agencies to ensure parent perspectives are integrated into decision-making.
- Actively participate in strategic planning and evaluation efforts to help shape priorities and measure the effectiveness of child-serving programs.
- Promote transparency by sharing advisory outcomes and Board insights with families and stakeholders statewide.

## How Progress is Measured:

- Deliver at least one formal recommendation annually to the Commission and partner agencies through reports, presentations, or direct discussions.
- Contribute at least 10 personal insights, stories, and examples that reflect diverse family experiences.
- Review and provide feedback on 100% of the relevant proposals brought forward by the Commission or agencies within specified timelines and applicable lived experience.
- Hold monthly coordination meetings with Commission staff and representatives from partner agencies.
- Contribute to at least two strategic planning or evaluation sessions annually.
- Publish at least four summaries of Board activities and outcomes annually, distributed through multiple channels to reach partners, stakeholders, and families.

**Impact:** Serve as a trusted advisory resource to guide decision-making across child-serving systems.





# Action #2: Educate

Key Activities:	How Progress Is Measured:
<ul style="list-style-type: none"><li>• Actively engage with local, state, and agency partners to promote family centered policies and practices through education and strategic communication.</li><li>• Enhance our understanding of public policy and systems change through ongoing training and resource sharing.</li><li>• Share authentic family experiences to ensure policy recommendations are informed by lived experience.</li><li>• Track our contributions by documenting policy or practice shifts influenced by our education and engagement.</li><li>• Sustain ongoing communication with policymakers and child-serving agencies to promote family-centered approaches.</li></ul>	<ul style="list-style-type: none"><li>• At least 75% of our members participate in two or more policy engagement or strategic communication activities each year.</li><li>• Host or participate in two training sessions on policy, systems or communication strategies annually, with 90%-member participation.</li><li>• Incorporate lived experience stories into at least three partner trainings, workshops, or policy briefings annually as a core educational tool.</li><li>• Document at least two annual policy or practice improvements influenced by our education and engagement.</li><li>• Convene or participate in at least six collaborative meetings or forums annually with legislators, agency leaders, or policymakers.</li></ul>

**Impact:** Advance family-centered policies and practices by educating partners through lived-experience-driven insights, storytelling, and engagement.



# Action #3: Collaborate

## Key Activities:

- Build and maintain strong partnerships with child-serving agencies, community organizations, and families to enhance coordination and support.
- Engage in joint initiatives and projects that promote family-centered approaches across systems.
- Facilitate regular communication and information sharing among partners to align goals and strategies.
- Share community resources with families and partners, based on our lived experience and knowledge of local resources.
- Promote family engagement by creating opportunities for families to participate actively in collaborative efforts.

## How Progress is Measured:

- Establish and sustain at least one active partnership annually.
- Participate in at least three collaborative projects or initiatives each year.
- Organize at least two collaborative meetings or forums with key stakeholders.
- Contribute at least 25 resource referrals or connections each year.
- Host at least one family engagement event or service project annually.

**Impact:** Cultivate collaborative relationships to strengthen systems and elevate family-centered practice.

# Action #4: Lead

Key Activities:	How Progress is Measured:
<ul style="list-style-type: none"><li>• Actively lead initiatives that amplify parent perspectives in child-serving systems.</li><li>• Foster leadership development among Board members to strengthen advocacy and system-change skills.</li><li>• Represent parent voices in key decision-making forums and policy discussions across Oklahoma.</li><li>• Promote innovative approaches to family-centered care through research, pilot projects, and sharing best practices.</li><li>• Cultivate partnerships that expand opportunities for parents to lead and influence system improvements.</li></ul>	<ul style="list-style-type: none"><li>• Spearhead at least one parent-led initiative annually.</li><li>• Participate in two leadership development opportunities each year, with participation from 90% of our members.</li><li>• Participate in three or more decision-making meetings or public forums each year.</li><li>• Initiate or support at least one innovation-focused project or pilot annually.</li></ul>

**Impact:** Champion family-centered change by leading efforts that elevate parent voice and improve child-serving systems.



# Monitoring Progress

Utilizing OCCY's existing partnership with the University of Oklahoma's Educational Training, Evaluation, Assessment & Measurement (E-TEAM), the Parent Partnership Board will conduct an annual review of this plan to assess progress.

Regular data collection and analysis will guide ongoing improvements, ensuring the plan remains relevant, effective, and aligned with the Board's priorities.

- Annual Progress Tracker
- Biannual Check-Ins
- Stories + Numbers
- Meeting Notes
- Annual Reflection





# Engage with the Parent Partnership Board

The Parent Partnership Board brings the lived experience of families directly into system improvement efforts.

Child-serving agencies can partner with the Board to:

- **Advise** – Strengthen policies and practice with insight from parent leaders
  - *Invite the Board to review new policies, proposals, or family-facing materials*
- **Educate** – Enrich training and outreach with real- world family perspectives
  - *Include parent leaders in staff trainings, conferences or community events*
- **Collaborate** – Co-design programs and solutions across systems
  - *Add PPB members to cross-agency workgroups or strategic planning efforts*
- **Lead** – Drive family-centered change through lived-experience-informed leadership
  - *Engage the Board as co-presents or thought partners in reform initiatives*



# Contact Information



James Ray  
PPB Co-Chair  
rayjams92@gmail.com



Delena Sullivan  
PPB Co-Chair  
sullivandelena@yahoo.com



Isabel Rodriguez  
OCCY Community Planner  
Isabel.Rodriguez@occy.ok.gov



Danielle Dill  
OCCY Program Manager  
Danielle.Dill@occy.ok.gov

