

White Rock Wind, LLC

RECEIVED
PUBLIC UTILITY
DIVISION

717 Texas Avenue, Suite 1000
Houston, Texas 77002

September 15, 2016

2016 SEP 16 PM 3 16

Caddo County Board of County Commissioners
PO Box 1427
Anadarko, OK 73005-1427

Attn: Commissioner Benny Bowling
Commissioner Randy McLemore
Commissioner Brent Kinder

RE: NOTICE OF INTENT TO CONSTRUCT A WIND ENERGY FACILITY

Dear Commissioners:

Pursuant to 17 Okla. Stat. § 160.21(A) and 165 OAC 35-45-4 (d), White Rock Wind, LLC (the "Company") hereby informs the County Commission of its intent to construct the White Rock Wind Project ("Project") in Caddo County, Oklahoma. Initial work intended to occur in 2016 will consist only of excavating a limited number of turbine foundations and building approximately three miles of access roads. No turbine equipment will be installed at this time.

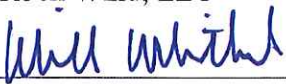
Enclosed herewith is a copy of the Notice of Intent to Construct a Wind Energy Facility submitted to the Oklahoma Corporation Commission on September 15, 2016.

As required by 17 Okla. Stat. § 160.21(C) and 165 OAC 35-45-4(f), we will be scheduling a Public Meeting to discuss the project and will provide you with further information regarding the date, time and location of that meeting.

If you have any questions regarding the Notice or the Project, please don't hesitate to call me.

Sincerely

White Rock Wind, LLC

By: 
William Whitlock
Vice President

cc: Brandy Wreath, Director, Public Utility Division, Oklahoma Corporation Commission
Fairo Michell, Chief of Water and Energy, Public Utility Division, Oklahoma Corporation Commission

EXHIBIT A
White Rock Wind Project

FAA Form 7460-1 Summary

Wind Turbine Locations and Elevations

Structure Name	Current ASN	Previous ASN	Date Filed	Status	Date Complete	Latitude (DD-MM-SS.SS)	Longitude (DD-MM-SS.SS)	Site Elevation (MGS)	Structure Height (AGL)	Requested MSL	Notes	Conditions
White Rock, Turbine 7	2016-WTW-9222-0E		8/11/2016	Work in progress		34-58-32.01	95-14-00.71	1370	499		White Paint/Synchronized Red Lights	
White Rock, Turbine 8	2016-WTW-9224-0E		8/11/2016	Work in progress		34-58-46.32	95-15-51.33	1400	499		White Paint/Synchronized Red Lights	
White Rock, Turbine 21	2016-WTW-9225-0E		8/11/2016	Work in progress		34-59-22.83	95-13-41.55	1400	499		White Paint/Synchronized Red Lights	
White Rock, Turbine 25	2016-WTW-9221-0E	2016-WTW-9226-0E	8/15/2016	Work in progress		34-59-20.70	95-13-21.00	1415	499		White Paint/Synchronized Red Lights	Refilled 8/25/2016
White Rock, Turbine 28	2016-WTW-9222-0E	2016-WTW-9227-0E	8/15/2016	Work in progress		34-58-05.56	95-13-21.63	1486	499		White Paint/Synchronized Red Lights	Refilled 8/25/2016
White Rock, Turbine 30	2016-WTW-9228-0E		8/11/2016	Work in progress		35-00-10.13	95-13-07.66	1420	499		White Paint/Synchronized Red Lights	
White Rock, Turbine 31	2016-WTW-9229-0E		8/11/2016	Work in progress		34-58-31.18	95-13-05.12	1440	499		White Paint/Synchronized Red Lights	
White Rock, Turbine 32	2016-WTW-9230-0E		8/11/2016	Work in progress		34-58-28.01	95-12-47.50	1430	499		White Paint/Synchronized Red Lights	
White Rock, Turbine 33	2016-WTW-9231-0E		8/11/2016	Work in progress		35-00-08.19	95-12-40.12	1350	499		White Paint/Synchronized Red Lights	
White Rock, Turbine 37	2016-WTW-9232-0E		8/11/2016	Work in progress		34-59-22.40	95-13-37.40	1400	499		White Paint/Synchronized Red Lights	
White Rock, Turbine 49	2016-WTW-9233-0E		8/11/2016	Work in progress		34-58-57.17	95-13-34.72	1390	499		White Paint/Synchronized Red Lights	
White Rock, Turbine 5	2016-WTW-9234-0E		8/11/2016	Work in progress		34-59-17.88	95-10-30.92	1430	499		White Paint/Synchronized Red Lights	
White Rock, Turbine 13	2016-WTW-9236-0E		8/11/2016	Work in progress		34-58-07.82	95-17-29.95	1470	499		White Paint/Synchronized Red Lights	
White Rock, Turbine 26	2016-WTW-9237-0E		8/11/2016	Work in progress		34-57-03.23	95-14-57.17	1470	499		White Paint/Synchronized Red Lights	
White Rock, Turbine 29	2016-WTW-9238-0E		8/11/2016	Work in progress		34-58-44.24	95-13-11.64	1430	499		White Paint/Synchronized Red Lights	
White Rock, Turbine 35	2016-WTW-9239-0E		8/11/2016	Work in progress		35-00-07.39	95-07-22.56	1400	499		White Paint/Synchronized Red Lights	
White Rock, Turbine 051	2016-WTW-9235-0E		8/15/2016	Work in progress		34-58-45.47	95-16-43.74	1381	499		White Paint/Synchronized Red Lights	New structure filed with refil on 8/25/2016
White Rock, Turbine 052	2016-WTW-9234-0E		8/25/2016	Work in progress		34-58-49.44	95-16-18.68	1515	499		White Paint/Synchronized Red Lights	New structure filed with refil on 8/25/2016
White Rock, Turbine 31	2016-WTW-9233-0E		8/25/2016	Work in progress		34-59-18.85	95-19-58.63	1432	499		White Paint/Synchronized Red Lights	New structure filed with refil on 8/25/2016
White Rock, Turbine 32	2016-WTW-9238-0E		8/25/2016	Work in progress		34-59-26.34	95-19-26.34	1432	499		White Paint/Synchronized Red Lights	New structure filed with refil on 8/25/2016
White Rock, Turbine 33	2016-WTW-9200E		8/25/2016	Work in progress		34-56-1.27	95-12-35.54	1455	499		White Paint/Synchronized Red Lights	New structure filed with refil on 8/25/2016

EXHIBIT B

White Rock Wind Project

Project Boundary Map

White Rock Wind

300 MW wind farm consisting of 150, 2.0 MW wind turbine generators

Proposed start of construction: Feb 2019

Legend

 Project boundary

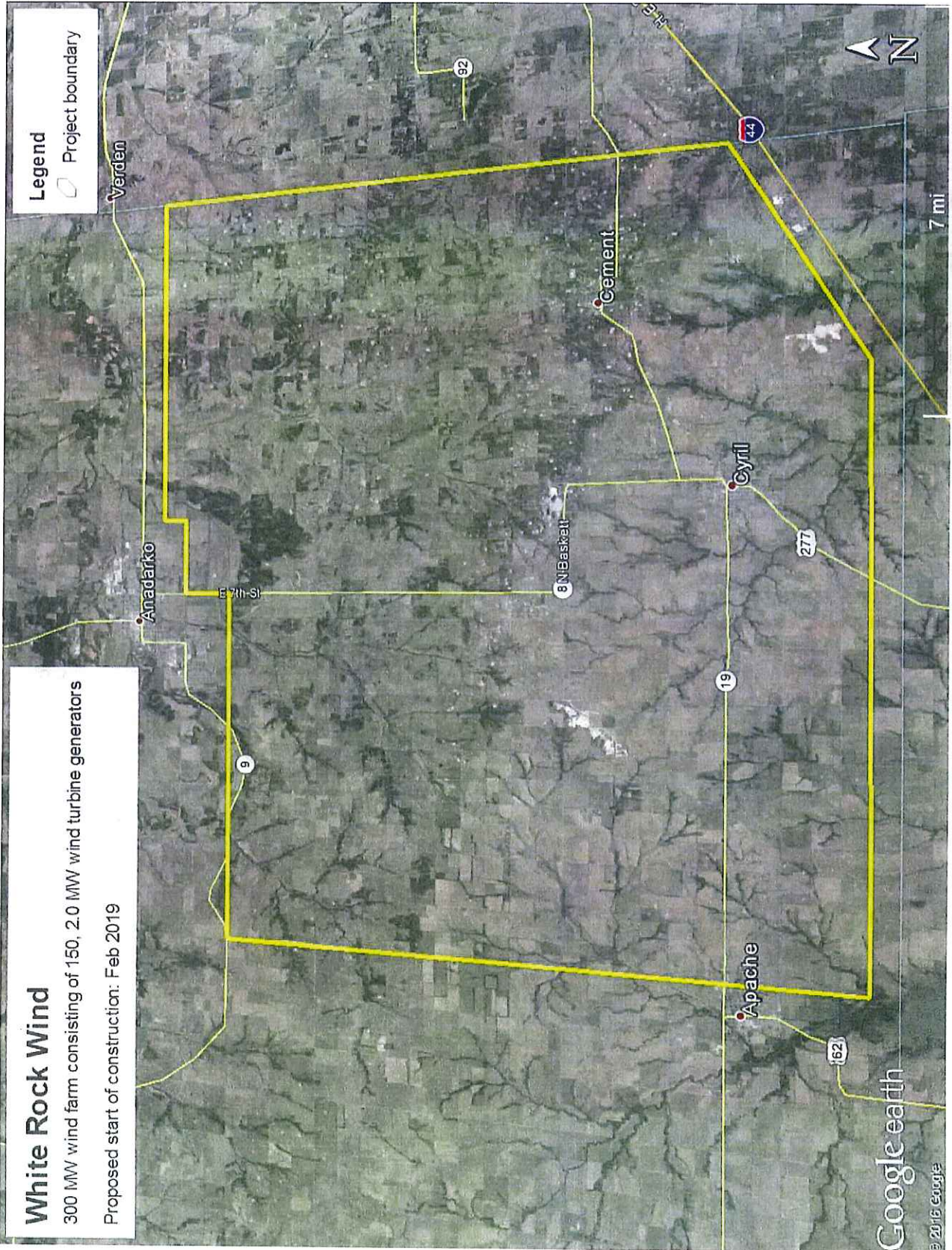


EXHIBIT C
White Rock Wind Project
Transmittal Letter to the
Caddo County Board of County Commissioners