



RES America Developments Inc.
9050 N. Capital of Texas Hwy.
Suite 390
Austin, TX 78759
Phone: 512 708 1538
Fax: 512 708 1757
Email: info@res-americas.com
Web: www.res-americas.com

RECEIVED
PUBLIC UTILITY
DIVISION

2015 SEP 22 60 8 43

September 16, 2015

VIA CERTIFIED MAIL, RETURN RECEIPT REQUESTED

Oklahoma Corporation Commission
PO Box 52000
Oklahoma City, OK 73152-2000

Re: Notice of plans for a wind farm in Beaver County Oklahoma

To Whom It May Concern:

Pursuant to HB NO 808, 17 Okla. Stat. §160 this is a notification of plans for the erection of wind turbines related to the Bluestem Wind Energy, LLC wind project. Notice is being provided within six (6) months of the initial filing pertaining to commencement of construction with the Federal Aviation Administration (FAA). Enclosed is all of the information submitted to the FAA for that purpose.

The Project site is located within the boundaries of Beaver County. Please see attached map of the proposed location of all of the various elements of the wind energy facility. The Project will consist of up to 100 wind turbine generators, one substation, approximately 4 miles of 345kV kilovolt (kV) transmission line, at least one anemometer tower and related infrastructure in Beaver County. Construction is expected to begin around January of 2016.

This notice is being provided to you because Section 3 of HB 808 requires such notification.

If you have any questions, please contact me at (512) 814-3033.

Sincerely,

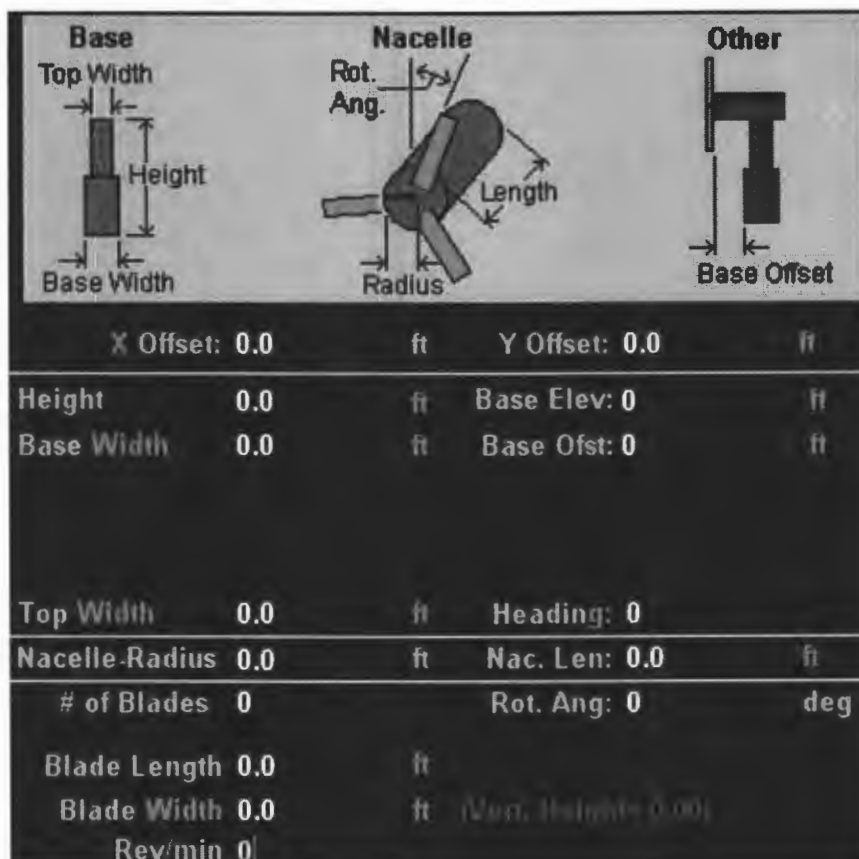
Jeff Sabins
Development Manager, South Central
Email: jeff.sabins@res-americas.com

1. Make: **Vestas**

2. Model: **V117-3.3 60 Hz 91.5m Hub Height**

3. Turbine dimensions:

- a. Base height: **292.3 Feet**
- b. Base width (at the bottom): **13.0 Feet**
- c. Base width (at the top): **10.7 Feet**
- d. Base offset (from the blades): **7.9 Feet (Prod. Mode)**
- e. Nacelle length: **41.8 ft (does not include hub)**
- f. Nacelle radius: **7.0 ft**
- g. Blade length: **187.5 ft (blade root to tip; hub not included)**
- h. Blade width: **13.1 ft (fattest part)**



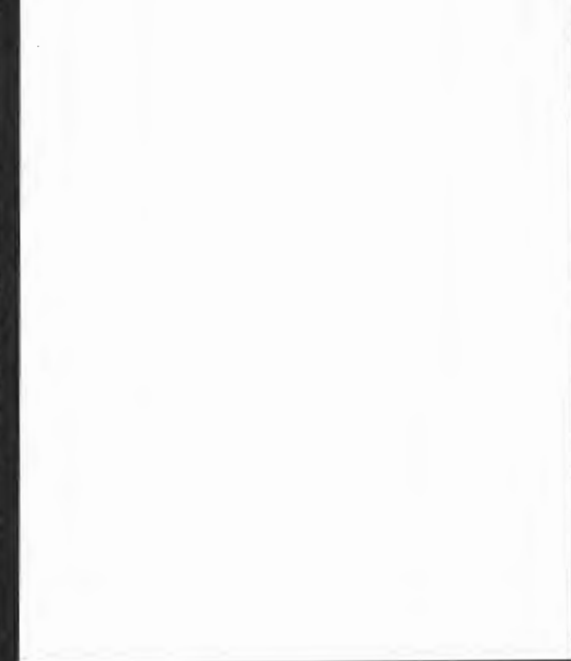
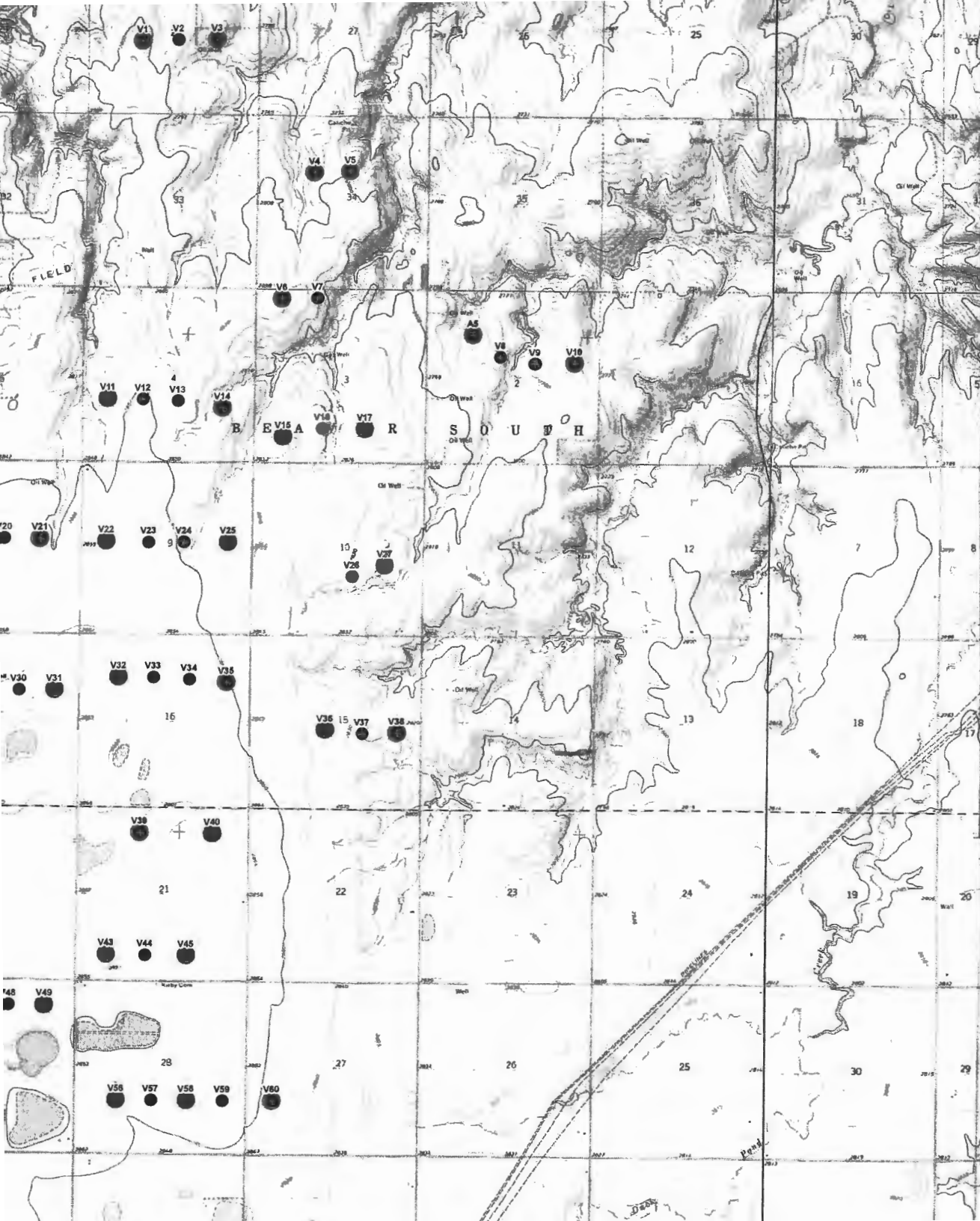
cuts off
here

Structure Name:	Structure Type:	Notice Of:	Duration:	Latitude (N):			Longitude (W):			Horizontal Datum:	Site Elevation (Feet):	Structure Height (Feet):	Requested Marking/Lighting:
				D	M	S	D	M	S				
A1	Wind Turbine	Construction	Permanent	36	30	18.76	100	36	30.23	NAD83	2858	498	White Paint/Synchronized Red Lights
A2	Wind Turbine	Construction	Permanent	36	30	18.73	100	36	16.96	NAD83	2855	498	White Paint Only
A3	Wind Turbine	Construction	Permanent	36	30	18.70	100	36	3.70	NAD83	2849	498	White Paint Only
A4	Wind Turbine	Construction	Permanent	36	30	18.67	100	35	50.44	NAD83	2847	498	White Paint/Synchronized Red Lights
A5	Wind Turbine	Construction	Permanent	36	35	0.62	100	33	14.62	NAD83	2775	498	White Paint/Synchronized Red Lights
T1	Wind Turbine	Construction	Permanent	36	36	28.52	100	35	21.07	NAD83	2804	498	White Paint/Synchronized Red Lights
T2	Wind Turbine	Construction	Permanent	36	36	28.93	100	35	7.52	NAD83	2792	498	White Paint Only
T3	Wind Turbine	Construction	Permanent	36	36	29.21	100	34	53.16	NAD83	2781	498	White Paint/Synchronized Red Lights
T4	Wind Turbine	Construction	Permanent	36	35	49.31	100	34	15.60	NAD83	2791	498	White Paint/Synchronized Red Lights
T5	Wind Turbine	Construction	Permanent	36	35	49.65	100	34	2.32	NAD83	2795	498	White Paint/Synchronized Red Lights
T6	Wind Turbine	Construction	Permanent	36	35	11.16	100	34	26.85	NAD83	2829	498	White Paint/Synchronized Red Lights
T7	Wind Turbine	Construction	Permanent	36	35	11.43	100	34	13.58	NAD83	2810	498	White Paint Only
T8	Wind Turbine	Construction	Permanent	36	34	54.01	100	33	3.94	NAD83	2780	498	White Paint Only
T9	Wind Turbine	Construction	Permanent	36	34	52.10	100	32	50.87	NAD83	2765	498	White Paint Only
T10	Wind Turbine	Construction	Permanent	36	34	52.33	100	32	36.18	NAD83	2781	498	White Paint/Synchronized Red Lights
T11	Wind Turbine	Construction	Permanent	36	34	40.62	100	35	31.81	NAD83	2835	498	White Paint/Synchronized Red Lights
T12	Wind Turbine	Construction	Permanent	36	34	40.46	100	35	18.46	NAD83	2852	498	White Paint Only
T13	Wind Turbine	Construction	Permanent	36	34	40.04	100	35	5.19	NAD83	2845	498	White Paint Only
T14	Wind Turbine	Construction	Permanent	36	34	38.13	100	34	48.60	NAD83	2833	498	White Paint/Synchronized Red Lights
T15	Wind Turbine	Construction	Permanent	36	34	29.62	100	34	25.43	NAD83	2835	498	White Paint/Synchronized Red Lights
T16	Wind Turbine	Construction	Permanent	36	34	32.14	100	34	10.85	NAD83	2832	498	White Paint Only
T17	Wind Turbine	Construction	Permanent	36	34	32.01	100	33	54.77	NAD83	2825	498	White Paint/Synchronized Red Lights
T18	Wind Turbine	Construction	Permanent	36	33	58.04	100	36	36.03	NAD83	2852	498	White Paint/Synchronized Red Lights
T19	Wind Turbine	Construction	Permanent	36	33	58.13	100	36	22.76	NAD83	2853	498	White Paint Only
T20	Wind Turbine	Construction	Permanent	36	33	58.30	100	36	9.49	NAD83	2855	498	White Paint Only
T21	Wind Turbine	Construction	Permanent	36	33	58.29	100	35	56.21	NAD83	2855	498	White Paint/Synchronized Red Lights
T22	Wind Turbine	Construction	Permanent	36	33	57.68	100	35	31.26	NAD83	2858	498	White Paint/Synchronized Red Lights
T23	Wind Turbine	Construction	Permanent	36	33	57.41	100	35	15.12	NAD83	2855	498	White Paint Only
T24	Wind Turbine	Construction	Permanent	36	33	57.52	100	35	1.85	NAD83	2845	498	White Paint Only
T25	Wind Turbine	Construction	Permanent	36	33	57.64	100	34	45.40	NAD83	2846	498	White Paint/Synchronized Red Lights
T26	Wind Turbine	Construction	Permanent	36	33	47.42	100	33	58.65	NAD83	2828	498	White Paint Only
T27	Wind Turbine	Construction	Permanent	36	33	50.95	100	33	46.01	NAD83	2821	498	White Paint/Synchronized Red Lights
T28	Wind Turbine	Construction	Permanent	36	33	2.20	100	36	35.92	NAD83	2859	498	White Paint/Synchronized Red Lights
T29	Wind Turbine	Construction	Permanent	36	33	2.19	100	36	22.32	NAD83	2860	498	White Paint Only
T30	Wind Turbine	Construction	Permanent	36	33	12.57	100	36	2.99	NAD83	2861	498	White Paint Only
T31	Wind Turbine	Construction	Permanent	36	33	12.68	100	35	49.72	NAD83	2862	498	White Paint/Synchronized Red Lights
T32	Wind Turbine	Construction	Permanent	36	33	16.67	100	35	25.59	NAD83	2860	498	White Paint/Synchronized Red Lights
T33	Wind Turbine	Construction	Permanent	36	33	16.69	100	35	12.31	NAD83	2855	498	White Paint Only
T34	Wind Turbine	Construction	Permanent	36	33	16.09	100	34	58.83	NAD83	2853	498	White Paint Only
T35	Wind Turbine	Construction	Permanent	36	33	15.36	100	34	45.14	NAD83	2850	498	White Paint/Synchronized Red Lights
T36	Wind Turbine	Construction	Permanent	36	33	1.19	100	34	7.77	NAD83	2835	498	White Paint/Synchronized Red Lights
T37	Wind Turbine	Construction	Permanent	36	33	0.07	100	33	53.95	NAD83	2838	498	White Paint Only
T38	Wind Turbine	Construction	Permanent	36	33	0.41	100	33	40.52	NAD83	2820	498	White Paint/Synchronized Red Lights
T39	Wind Turbine	Construction	Permanent	36	32	29.84	100	35	16.75	NAD83	2859	498	White Paint/Synchronized Red Lights
T40	Wind Turbine	Construction	Permanent	36	32	29.64	100	34	49.56	NAD83	2858	498	White Paint/Synchronized Red Lights
T41	Wind Turbine	Construction	Permanent	36	32	1.83	100	37	9.81	NAD83	2865	498	White Paint/Synchronized Red Lights
T42	Wind Turbine	Construction	Permanent	36	32	1.72	100	36	54.37	NAD83	2865	498	White Paint Only
T43	Wind Turbine	Construction	Permanent	36	31	53.10	100	35	28.90	NAD83	2855	498	White Paint/Synchronized Red Lights
T44	Wind Turbine	Construction	Permanent	36	31	52.94	100	35	14.06	NAD83	2855	498	White Paint Only
T45	Wind Turbine	Construction	Permanent	36	31	52.92	100	34	58.54	NAD83	2854	498	White Paint/Synchronized Red Lights
T46	Wind Turbine	Construction	Permanent	36	31	37.86	100	36	33.71	NAD83	2862	498	White Paint/Synchronized Red Lights
T47	Wind Turbine	Construction	Permanent	36	31	37.83	100	36	18.56	NAD83	2858	498	White Paint Only
T48	Wind Turbine	Construction	Permanent	36	31	37.65	100	36	5.28	NAD83	2858	498	White Paint Only
T49	Wind Turbine	Construction	Permanent	36	31	37.74	100	35	51.80	NAD83	2857	498	White Paint/Synchronized Red Lights
T50	Wind Turbine	Construction	Permanent	36	31	8.03	100	38	11.73	NAD83	2872	498	White Paint/Synchronized Red Lights
T51	Wind Turbine	Construction	Permanent	36	31	11.93	100	37	59.39	NAD83	2865	498	White Paint Only
T52	Wind Turbine	Construction	Permanent	36	31	13.75	100	37	40.17	NAD83	2863	498	White Paint Only
T53	Wind Turbine	Construction	Permanent	36	31	14.09	100	37	26.91	NAD83	2864	498	White Paint/Synchronized Red Lights
T54	Wind Turbine	Construction	Permanent	36	31	14.08	100	37	13.64	NAD83	2865	498	White Paint Only
T55	Wind Turbine	Construction	Permanent	36	31	14.39	100	37	0.38	NAD83	2865	498	White Paint/Synchronized Red Lights
T56	Wind Turbine	Construction	Permanent	36	31	9.19	100	35	24.26	NAD83	2851	498	White Paint/Synchronized Red Lights
T57	Wind Turbine	Construction	Permanent	36	31	9.27	100	35	11.00	NAD83	2851	498	White Paint Only
T58	Wind Turbine	Construction	Permanent	36	31	9.25	100	34	57.73	NAD83	2851	498	White Paint/Synchronized Red Lights
T59	Wind Turbine	Construction	Permanent	36	31	9.14	100	34	44.46	NAD83	2851	498	White Paint Only
T60	Wind Turbine	Construction	Permanent	36	31	9.25	100	34	25.77	NAD83	2848	498	White Paint/Synchronized Red Lights

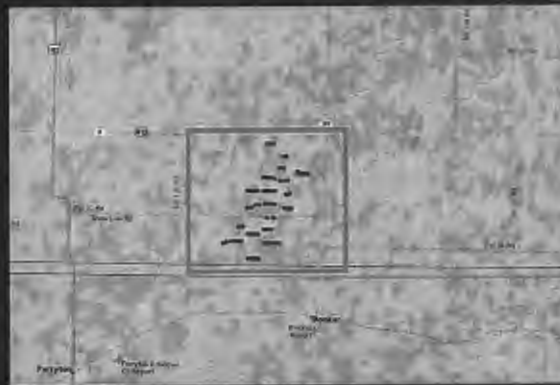
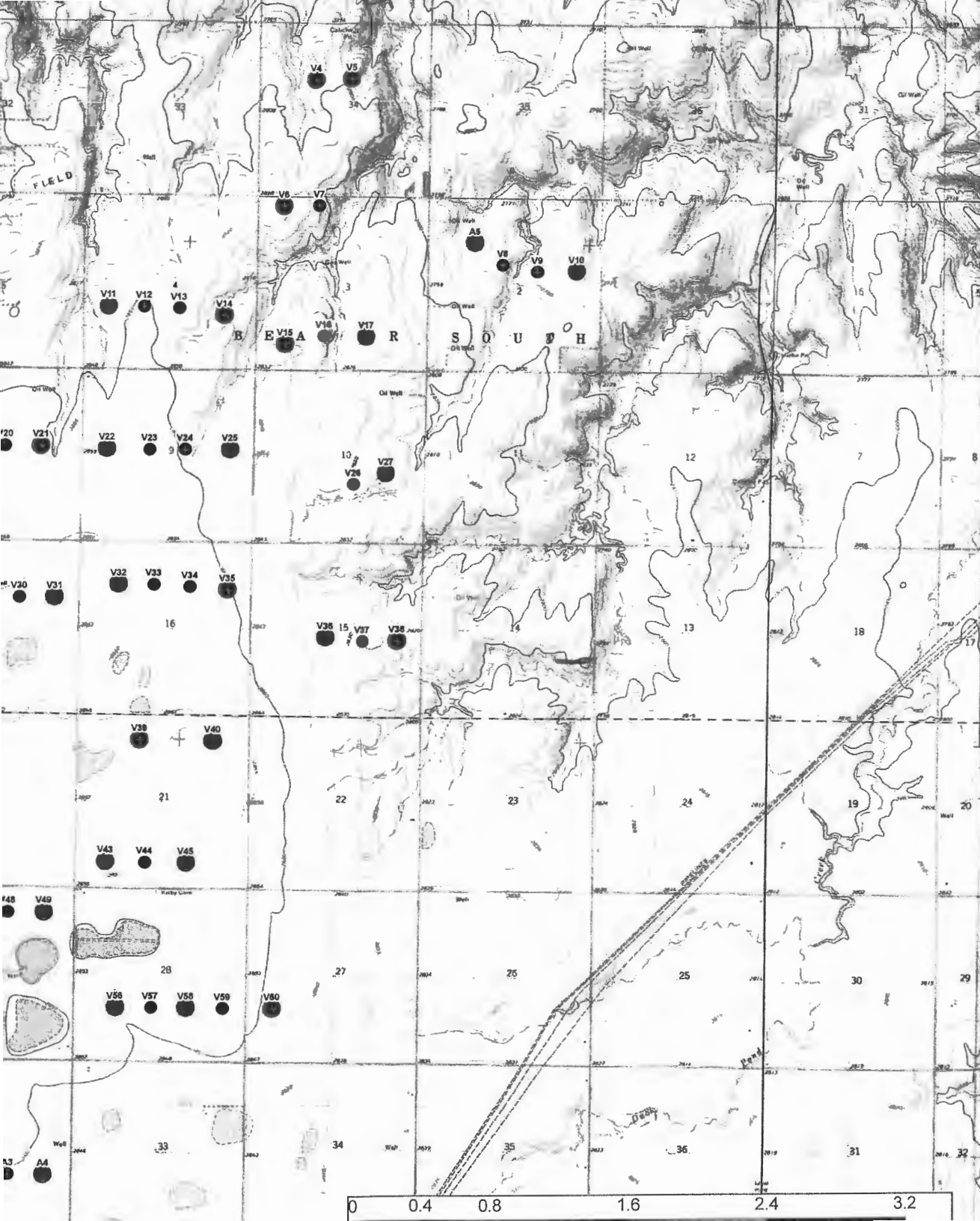
continues here



S	Longitude (W):			Horizontal Datum:	Site Elevation (Feet):	Structure Height (Feet):	Requested Marking/Lighting:	Nearest City:	Nearest State:	Description of Location:	Description of Proposal:
	D	M	S								
8.76	100	36	30.23	NAD83	2858	498	White Paint/Synchronized Red Lights	Beaver	Oklahoma	Beaver County, OK	60 Primary & 5 Alternate Wind Turbines
8.73	100	36	16.96	NAD83	2855	498	White Paint Only	Beaver	Oklahoma	Beaver County, OK	60 Primary & 5 Alternate Wind Turbines
8.70	100	36	3.70	NAD83	2849	498	White Paint Only	Beaver	Oklahoma	Beaver County, OK	60 Primary & 5 Alternate Wind Turbines
8.67	100	35	50.44	NAD83	2847	498	White Paint/Synchronized Red Lights	Beaver	Oklahoma	Beaver County, OK	60 Primary & 5 Alternate Wind Turbines
8.62	100	33	14.62	NAD83	2775	498	White Paint/Synchronized Red Lights	Beaver	Oklahoma	Beaver County, OK	60 Primary & 5 Alternate Wind Turbines
8.52	100	35	21.07	NAD83	2804	498	White Paint/Synchronized Red Lights	Beaver	Oklahoma	Beaver County, OK	60 Primary & 5 Alternate Wind Turbines
8.93	100	35	7.52	NAD83	2792	498	White Paint Only	Beaver	Oklahoma	Beaver County, OK	60 Primary & 5 Alternate Wind Turbines
9.21	100	34	53.16	NAD83	2781	498	White Paint/Synchronized Red Lights	Beaver	Oklahoma	Beaver County, OK	60 Primary & 5 Alternate Wind Turbines
9.31	100	34	15.60	NAD83	2791	498	White Paint/Synchronized Red Lights	Beaver	Oklahoma	Beaver County, OK	60 Primary & 5 Alternate Wind Turbines
9.65	100	34	2.32	NAD83	2795	498	White Paint/Synchronized Red Lights	Beaver	Oklahoma	Beaver County, OK	60 Primary & 5 Alternate Wind Turbines
1.16	100	34	26.85	NAD83	2829	498	White Paint/Synchronized Red Lights	Beaver	Oklahoma	Beaver County, OK	60 Primary & 5 Alternate Wind Turbines
1.43	100	34	13.58	NAD83	2810	498	White Paint Only	Beaver	Oklahoma	Beaver County, OK	60 Primary & 5 Alternate Wind Turbines
4.01	100	33	3.94	NAD83	2780	498	White Paint Only	Beaver	Oklahoma	Beaver County, OK	60 Primary & 5 Alternate Wind Turbines
2.10	100	32	50.87	NAD83	2765	498	White Paint Only	Beaver	Oklahoma	Beaver County, OK	60 Primary & 5 Alternate Wind Turbines
2.33	100	32	36.18	NAD83	2781	498	White Paint/Synchronized Red Lights	Beaver	Oklahoma	Beaver County, OK	60 Primary & 5 Alternate Wind Turbines
0.62	100	35	31.81	NAD83	2835	498	White Paint/Synchronized Red Lights	Beaver	Oklahoma	Beaver County, OK	60 Primary & 5 Alternate Wind Turbines
0.46	100	35	18.46	NAD83	2852	498	White Paint Only	Beaver	Oklahoma	Beaver County, OK	60 Primary & 5 Alternate Wind Turbines
0.04	100	35	5.19	NAD83	2845	498	White Paint Only	Beaver	Oklahoma	Beaver County, OK	60 Primary & 5 Alternate Wind Turbines
8.13	100	34	48.60	NAD83	2833	498	White Paint/Synchronized Red Lights	Beaver	Oklahoma	Beaver County, OK	60 Primary & 5 Alternate Wind Turbines
9.62	100	34	25.43	NAD83	2835	498	White Paint/Synchronized Red Lights	Beaver	Oklahoma	Beaver County, OK	60 Primary & 5 Alternate Wind Turbines
2.14	100	34	10.85	NAD83	2832	498	White Paint Only	Beaver	Oklahoma	Beaver County, OK	60 Primary & 5 Alternate Wind Turbines
0.01	100	33	54.77	NAD83	2825	498	White Paint/Synchronized Red Lights	Beaver	Oklahoma	Beaver County, OK	60 Primary & 5 Alternate Wind Turbines
8.04	100	36	36.03	NAD83	2852	498	White Paint/Synchronized Red Lights	Beaver	Oklahoma	Beaver County, OK	60 Primary & 5 Alternate Wind Turbines
8.13	100	36	22.76	NAD83	2853	498	White Paint Only	Beaver	Oklahoma	Beaver County, OK	60 Primary & 5 Alternate Wind Turbines
8.30	100	36	9.49	NAD83	2855	498	White Paint Only	Beaver	Oklahoma	Beaver County, OK	60 Primary & 5 Alternate Wind Turbines
8.29	100	35	56.21	NAD83	2855	498	White Paint/Synchronized Red Lights	Beaver	Oklahoma	Beaver County, OK	60 Primary & 5 Alternate Wind Turbines
7.68	100	35	31.26	NAD83	2858	498	White Paint/Synchronized Red Lights	Beaver	Oklahoma	Beaver County, OK	60 Primary & 5 Alternate Wind Turbines
7.41	100	35	15.12	NAD83	2855	498	White Paint Only	Beaver	Oklahoma	Beaver County, OK	60 Primary & 5 Alternate Wind Turbines
7.52	100	35	1.85	NAD83	2845	498	White Paint Only	Beaver	Oklahoma	Beaver County, OK	60 Primary & 5 Alternate Wind Turbines
7.64	100	34	45.40	NAD83	2846	498	White Paint/Synchronized Red Lights	Beaver	Oklahoma	Beaver County, OK	60 Primary & 5 Alternate Wind Turbines
7.42	100	33	58.65	NAD83	2828	498	White Paint Only	Beaver	Oklahoma	Beaver County, OK	60 Primary & 5 Alternate Wind Turbines
9.95	100	33	46.01	NAD83	2821	498	White Paint/Synchronized Red Lights	Beaver	Oklahoma	Beaver County, OK	60 Primary & 5 Alternate Wind Turbines
2.20	100	36	35.92	NAD83	2859	498	White Paint/Synchronized Red Lights	Beaver	Oklahoma	Beaver County, OK	60 Primary & 5 Alternate Wind Turbines
1.19	100	36	22.32	NAD83	2860	498	White Paint Only	Beaver	Oklahoma	Beaver County, OK	60 Primary & 5 Alternate Wind Turbines
2.57	100	36	2.99	NAD83	2861	498	White Paint Only	Beaver	Oklahoma	Beaver County, OK	60 Primary & 5 Alternate Wind Turbines
2.68	100	35	49.72	NAD83	2862	498	White Paint/Synchronized Red Lights	Beaver	Oklahoma	Beaver County, OK	60 Primary & 5 Alternate Wind Turbines
6.67	100	35	25.59	NAD83	2860	498	White Paint/Synchronized Red Lights	Beaver	Oklahoma	Beaver County, OK	60 Primary & 5 Alternate Wind Turbines
6.69	100	35	12.31	NAD83	2855	498	White Paint Only	Beaver	Oklahoma	Beaver County, OK	60 Primary & 5 Alternate Wind Turbines
6.09	100	34	58.83	NAD83	2853	498	White Paint Only	Beaver	Oklahoma	Beaver County, OK	60 Primary & 5 Alternate Wind Turbines
6.36	100	34	45.14	NAD83	2850	498	White Paint/Synchronized Red Lights	Beaver	Oklahoma	Beaver County, OK	60 Primary & 5 Alternate Wind Turbines
1.19	100	34	7.77	NAD83	2835	498	White Paint/Synchronized Red Lights	Beaver	Oklahoma	Beaver County, OK	60 Primary & 5 Alternate Wind Turbines
1.07	100	33	53.95	NAD83	2838	498	White Paint Only	Beaver	Oklahoma	Beaver County, OK	60 Primary & 5 Alternate Wind Turbines
1.41	100	33	40.52	NAD83	2820	498	White Paint/Synchronized Red Lights	Beaver	Oklahoma	Beaver County, OK	60 Primary & 5 Alternate Wind Turbines
9.84	100	35	16.75	NAD83	2859	498	White Paint/Synchronized Red Lights	Beaver	Oklahoma	Beaver County, OK	60 Primary & 5 Alternate Wind Turbines
9.64	100	34	49.56	NAD83	2858	498	White Paint/Synchronized Red Lights	Beaver	Oklahoma	Beaver County, OK	60 Primary & 5 Alternate Wind Turbines
1.83	100	37	9.81	NAD83	2865	498	White Paint/Synchronized Red Lights	Beaver	Oklahoma	Beaver County, OK	60 Primary & 5 Alternate Wind Turbines
1.72	100	36	54.37	NAD83	2865	498	White Paint Only	Beaver	Oklahoma	Beaver County, OK	60 Primary & 5 Alternate Wind Turbines
8.10	100	35	28.90	NAD83	2855	498	White Paint/Synchronized Red Lights	Beaver	Oklahoma	Beaver County, OK	60 Primary & 5 Alternate Wind Turbines
2.94	100	35	14.06	NAD83	2855	498	White Paint Only	Beaver	Oklahoma	Beaver County, OK	60 Primary & 5 Alternate Wind Turbines
2.92	100	34	58.54	NAD83	2854	498	White Paint/Synchronized Red Lights	Beaver	Oklahoma	Beaver County, OK	60 Primary & 5 Alternate Wind Turbines
7.86	100	36	33.71	NAD83	2862	498	White Paint/Synchronized Red Lights	Beaver	Oklahoma	Beaver County, OK	60 Primary & 5 Alternate Wind Turbines
7.83	100	36	18.56	NAD83	2858	498	White Paint Only	Beaver	Oklahoma	Beaver County, OK	60 Primary & 5 Alternate Wind Turbines
7.65	100	36	5.28	NAD83	2858	498	White Paint Only	Beaver	Oklahoma	Beaver County, OK	60 Primary & 5 Alternate Wind Turbines
7.74	100	35	51.80	NAD83	2857	498	White Paint/Synchronized Red Lights	Beaver	Oklahoma	Beaver County, OK	60 Primary & 5 Alternate Wind Turbines
1.03	100	38	11.73	NAD83	2872	498	White Paint/Synchronized Red Lights	Beaver	Oklahoma	Beaver County, OK	60 Primary & 5 Alternate Wind Turbines
1.93	100	37	59.39	NAD83	2865	498	White Paint Only	Beaver	Oklahoma	Beaver County, OK	60 Primary & 5 Alternate Wind Turbines
8.75	100	37	40.17	NAD83	2863	498	White Paint Only	Beaver	Oklahoma	Beaver County, OK	60 Primary & 5 Alternate Wind Turbines
4.09	100	37	26.91	NAD83	2864	498	White Paint/Synchronized Red Lights	Beaver	Oklahoma	Beaver County, OK	60 Primary & 5 Alternate Wind Turbines
4.08	100	37	13.64	NAD83	2865	498	White Paint Only	Beaver	Oklahoma	Beaver County, OK	60 Primary & 5 Alternate Wind Turbines
4.39	100	37	0.38	NAD83	2865	498	White Paint/Synchronized Red Lights	Beaver	Oklahoma	Beaver County, OK	60 Primary & 5 Alternate Wind Turbines
1.19	100	35	24.26	NAD83	2851	498	White Paint/Synchronized Red Lights	Beaver	Oklahoma	Beaver County, OK	60 Primary & 5 Alternate Wind Turbines
1.27	100	35	11.00	NAD83	2851	498	White Paint Only	Beaver	Oklahoma	Beaver County, OK	60 Primary & 5 Alternate Wind Turbines
2.25	100	34	57.73	NAD83	2851	498	White Paint/Synchronized Red Lights	Beaver	Oklahoma	Beaver County, OK	60 Primary & 5 Alternate Wind Turbines
1.14	100	34	44.46	NAD83	2851	498	White Paint Only	Beaver	Oklahoma	Beaver County, OK	60 Primary & 5 Alternate Wind Turbines
1.25	100	34	25.77	NAD83	2848	498	White Paint/Synchronized Red Lights	Beaver	Oklahoma	Beaver County, OK	60 Primary & 5 Alternate Wind Turbines



COORDINATE SYSTEM: UTM27-14 METERS
LAYOUT NUMBER: PUSABGR097
DRAWING NUMBER: 22003D0020-01



COORDINATE SYSTEM: UTM27-14 METERS
LAYOUT NUMBER: PUSABGR097
DRAWING NUMBER: 22003D0020-01
DRAWN BY: CS Date: 08/27/2015
APPROVED BY: AK Date: 08/27/2015

