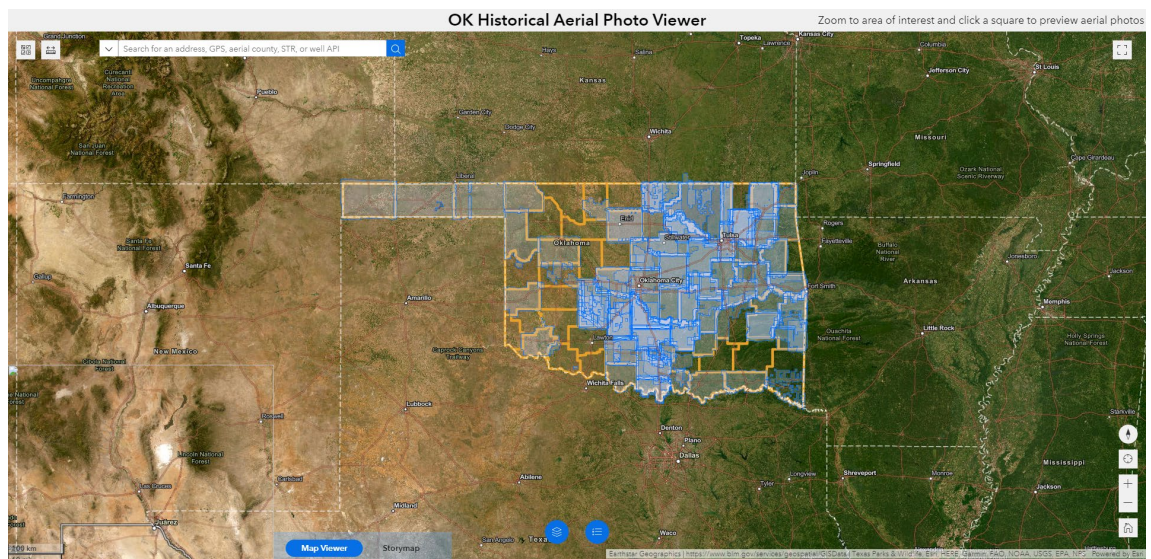


OCC Aerial Photo Viewer Instructions

BROWSER & URL RECOMMENDATIONS

- For the best experience, please view the OCC Aerial Photo Viewer App on a desktop or laptop computer and use a supported browser (Chrome, Edge, or Safari). Mobile devices do not work well with the size of the images, and screen size will prevent most viewer functions from operating properly.
- Users should navigate to:
<https://gis.occ.ok.gov/portal/apps/experiencebuilder/experience/?id=beb4e55def3d4b86a6c6a40968f296a6>.
- The home application screen will appear as below:



WEB-APP MENU BUTTONS

Top Left

- At the top left there are menu buttons for:

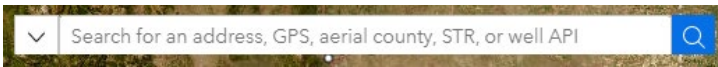
- **Basemap choice**



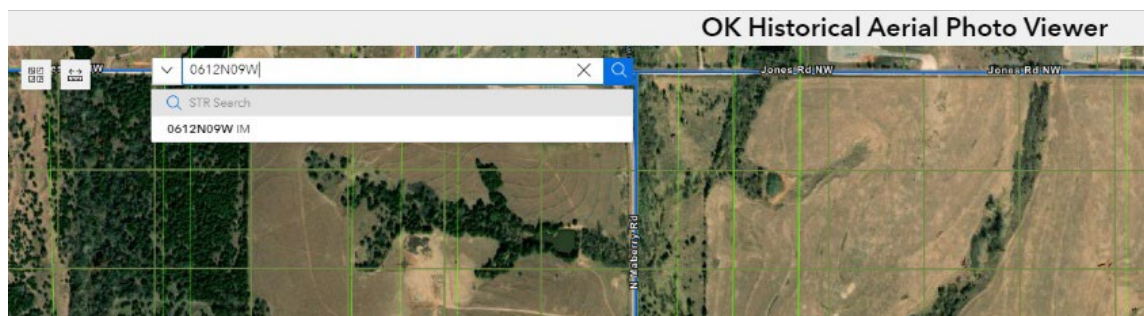
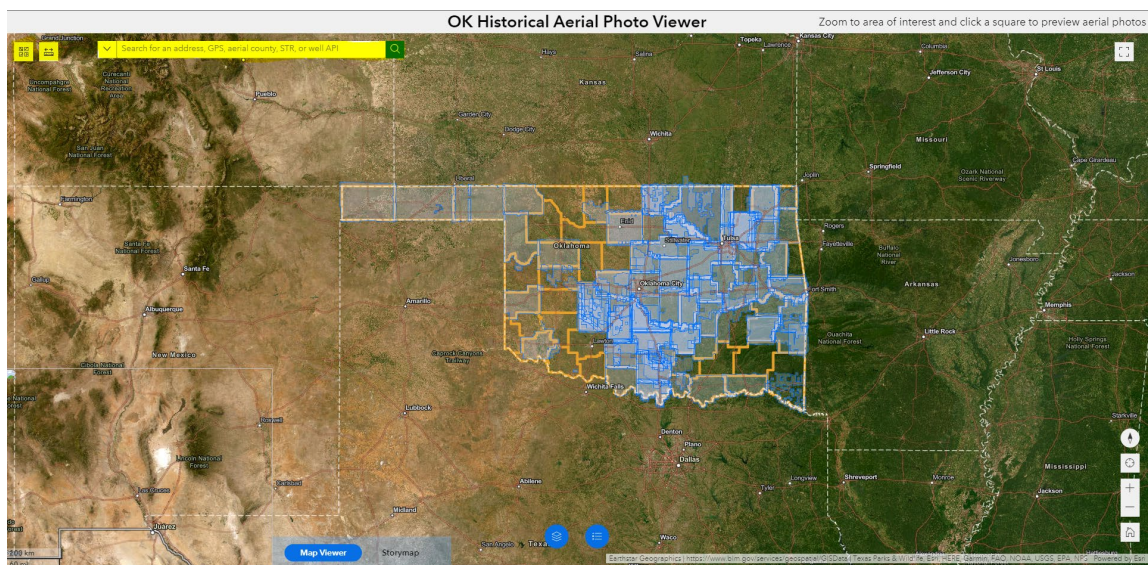
- **Measuring tools**



- **Multi-search box**



The **search box** will accept a 10-digit API and return the correct well from the well layer which will be visible in the search results below the search bar. When the user enters an API and presses **Enter** the map will zoom to the location of the well. A user can also search an address (or lat/long) and pressing **Enter** will zoom to the approximate location in the state. Section, Township, and Range are searchable in the format SSTWNRNG (ex. 0612N09W). Please press **Enter** or click on any search result in the list to zoom to the feature or location.



Bottom Right

- At the bottom right there are menu buttons for:

- Compass orientation



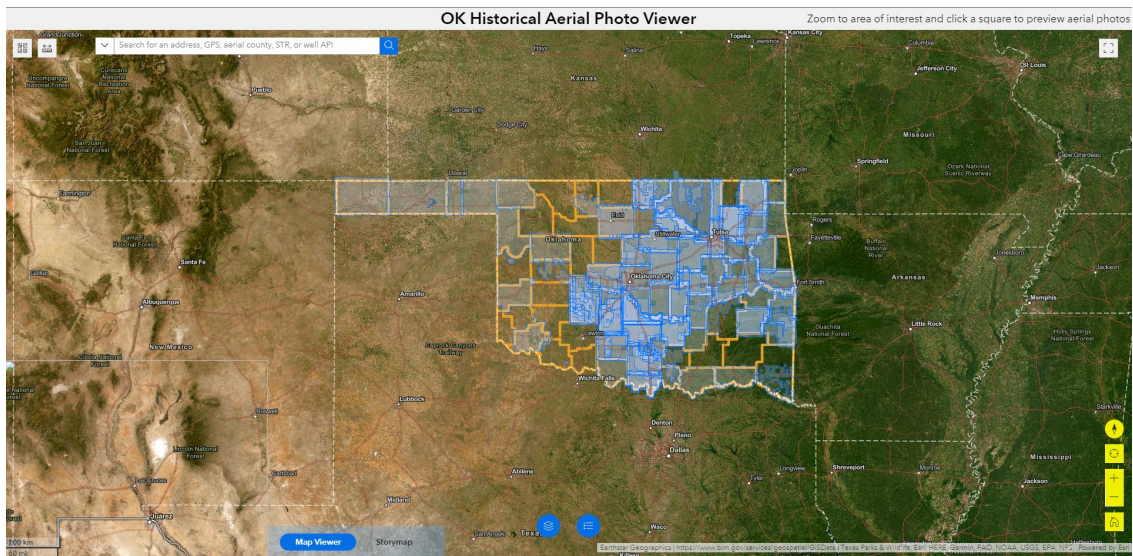
- GPS-enabled device “find-me” button



- Zoom buttons






- Home button



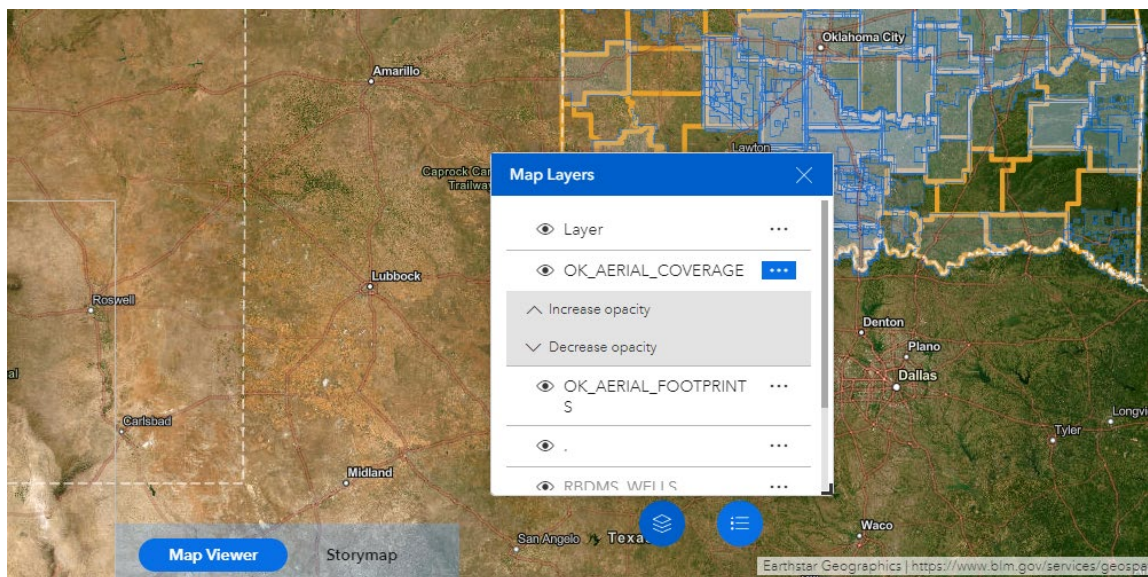
Bottom Center

- The bottom center menu contains buttons for:

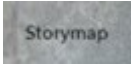
- **Legend**  contains the current map view's symbology
- **Map layers list**  contains layers that can be turned on or off in the map

The opacity of each layer can be adjusted by clicking the **three dots**  to the right of the layer name.

Each layer can be turned on or off using the **eye symbol**.



Other Pages

- The app also contains a built-in menu selector for the Storymap (OHADP: The Oklahoma Historical Aerial Digitization Project). Clicking the **Storymap**  button will open the tab with a history of the project, details of the georeferencing procedure, and other states' similar projects nationwide. Click the **Map Viewer** menu button to return to the Viewer app.



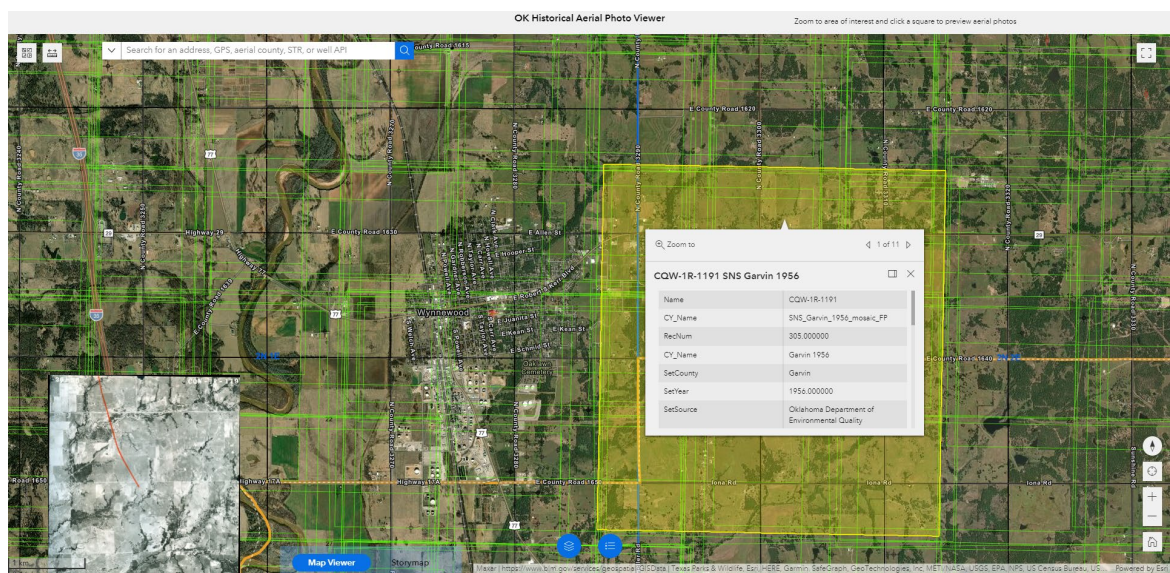
Pictured: Storymap home page with Map Viewer link at the top

VIEWING PHOTOS

To find all current georeferenced aerial photos for an area...

- **Zoom** to the area of interest (scroll with your mouse or use +/- in bottom right menu) or
- Search in the **Multi-search bar** by address, lat/long, STR, or a well API and press **Enter**

Once at a location of interest  **click the map** on the location to show the **popup** for all images covering the site.



The neon green squares are the outlines of georeferenced photos.

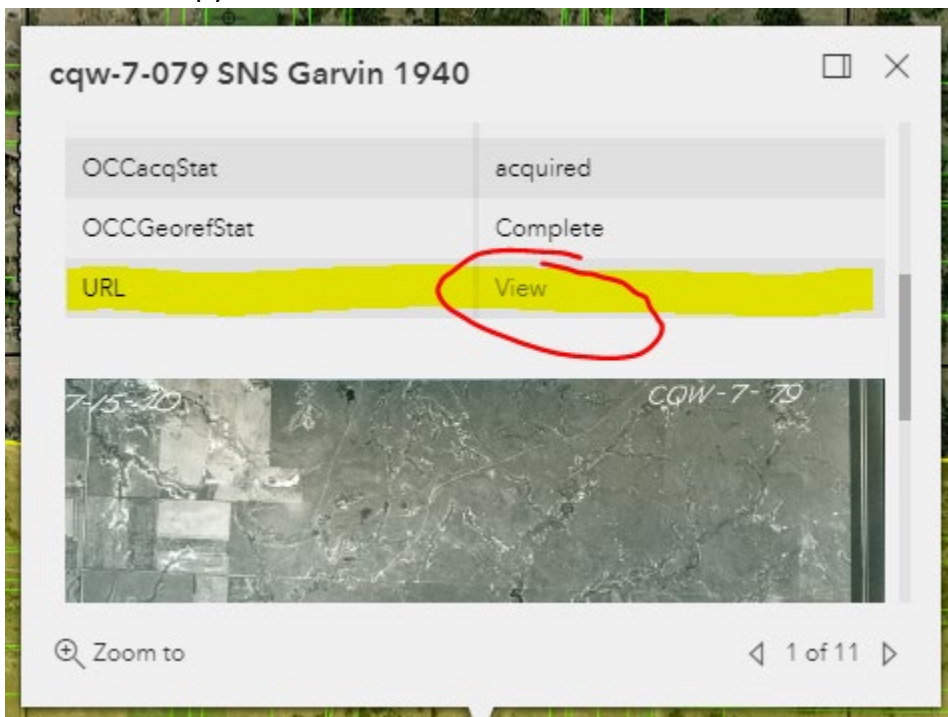
◀ 1 of 11 ▶

Use the selector arrows to cycle through all available images for that location. A preview of the images will be populated in the lower left corner (as seen above). The image identifier has the format: [Image name] [Coverage type] [County] [Year] (ex. CQW-1R-1191 SNS Garvin 1956).

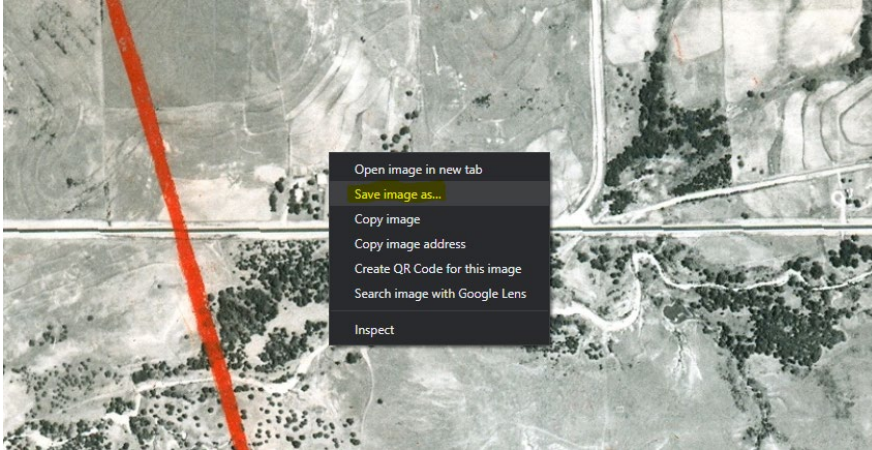
DOWNLOADING PHOTOS

To download full resolution images for an aerial...

- **Scroll down** within the popup window until the URL attribute is visible. The **View** link will open a new window or tab with the full resolution image directly from our OCC webserver.
- Click the link to view images in the browser or right-click and save image to computer to download a copy.



When you right-click on the image, you will see this "Save image" dialog (Chrome):



Note: Images will cover the area selected in the map viewer, however they will not necessarily be centered on the location which was searched. Different images overlap different areas for the complete coverage. If you download images you may have to refer to the map viewer to locate the area of interest selected and match it to the image.

CONCLUSION

This concludes the introduction to the new Aerial Photo Viewer App. If you are curious about other uses, or need help, please reach out to me on Teams or send me an email.

Prepared by Colin Brooks

Colin.Brooks@occ.ok.gov

ISD Regulatory Manager