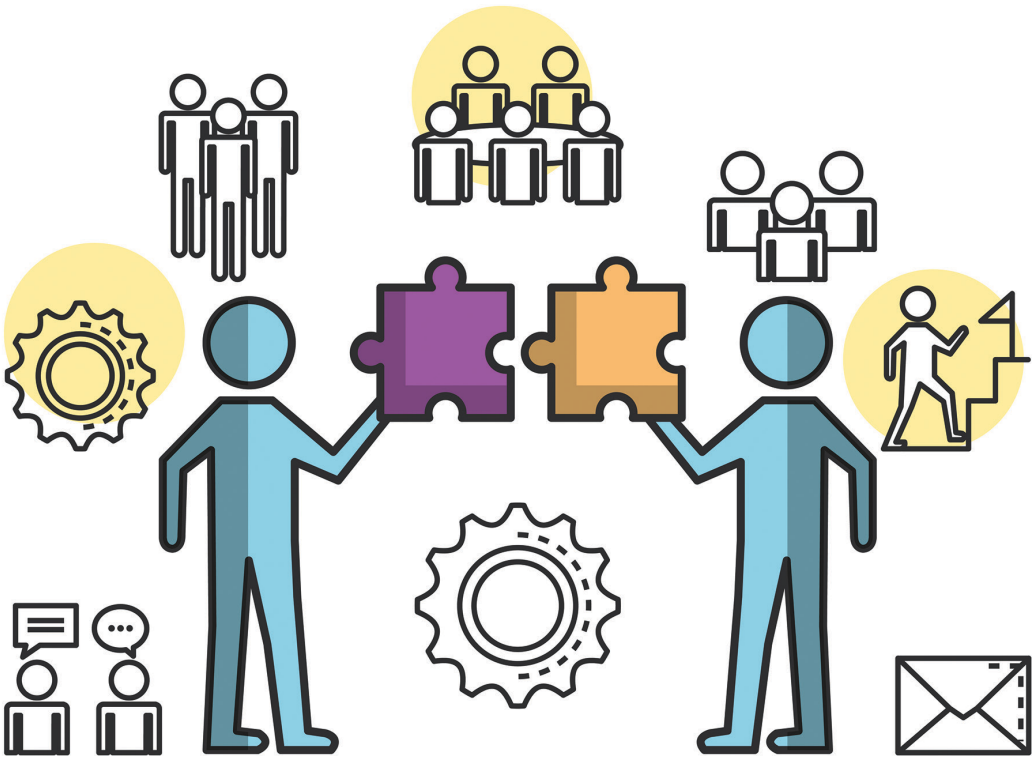


RESOURCES

PROFILE:

Employer Engagement



Prepared by:
Craig Maile
Resource Center for CareerTech Advancement
Oklahoma Department of Career and Technology Education
resourcecenter@careertech.ok.gov

September 2018

About the Resource Center



The Resource Center for CareerTech Advancement is a division of the Oklahoma Department of Career and Technology Education, located in Stillwater, Oklahoma. The staff of the Center research educational materials and best practices to disseminate throughout the state CareerTech system. The Resource Center also provides support in identifying curriculum, assessments, professional development and other instructional delivery resources on request.

<https://www.okcareertech.org/educators/resource-center>

WEBSITES & DOCUMENTS

1. Employer Involvement Guide

<http://inspiremadisonregion.org/wp-content/uploads/2015/06/ContinuumOnePager11x14.pdf>

A handy matrix of employer involvement activities at four levels of involvement.

2. Work-Based Learning Manual

<https://www.fhi360.org/resource/work-based-learning-manual>

A set of instructional strategies that engage employers and schools in providing learning experiences for students. This manual is a how-to guide with suggestions and tools for planning and conducting specific activities. Although district or school priorities and local partnership opportunities may vary, the manual provides information to implement each activity in the context of the complete WBL continuum.

3. Employer Engagement Resources

<https://careertech.org/resources/employer-engagement>

Resource links from Advance CTE.

4. Why Does Employer Engagement Matter

http://www.thecdi.net/write/Why_Does_Employer_Engagement_Matter_A_Toolkit_for_Managing_Employer_Activities_in_Schools_and_Colleges.pdf

A toolkit for managing employer activities in schools and colleges.

5. CTE Programs Partner With Employers for Success

<https://www.acteonline.org/wp-content/uploads/2018/05/Techniques-January2014-CTEProgramsPartnerForSuccess.pdf>

A 2014 feature from *Techniques* magazine.

6. Employer Workplace Tour Tip Sheet

<http://wbltoolkit.cte.nyc/wp-content/uploads/2017/07/9.1.5-Employer-Workplace-Tour-Tip-Sheet.pdf>

A checklist from the New York City Department of Education.

7. Increasing Access to Industry Experts in High Schools

https://cte.careertech.org/sites/default/files/files/resources/State_of_CTE_Industry_Experts_2016_0.pdf

Advance CTE, in partnership with the Center on Great Teachers and Leaders at American Institutes for Research, conducted a survey of 47 State CTE Directors and another survey of 260 local CTE teachers and administrators from across 26 states to learn more about strategies to increase access to industry experts in high schools.

8. Working With Business: A Guide for Educators

http://nycctecenter.org/images/files/Industry_Partnership/Work_with_biz.pdf

From the CTE Technical Assistance Center of New York.

9. Employer Involvement in Schools: A Rapid Review of UK and International Evidence

<https://www.nfer.ac.uk/publications/REIS01/REIS01.pdf>

The documents appraised for this review comprise research reports, literature reviews, case studies and guides to school and employer partnerships. Most of the evidence reviewed is based on qualitative rather than quantitative analysis.



