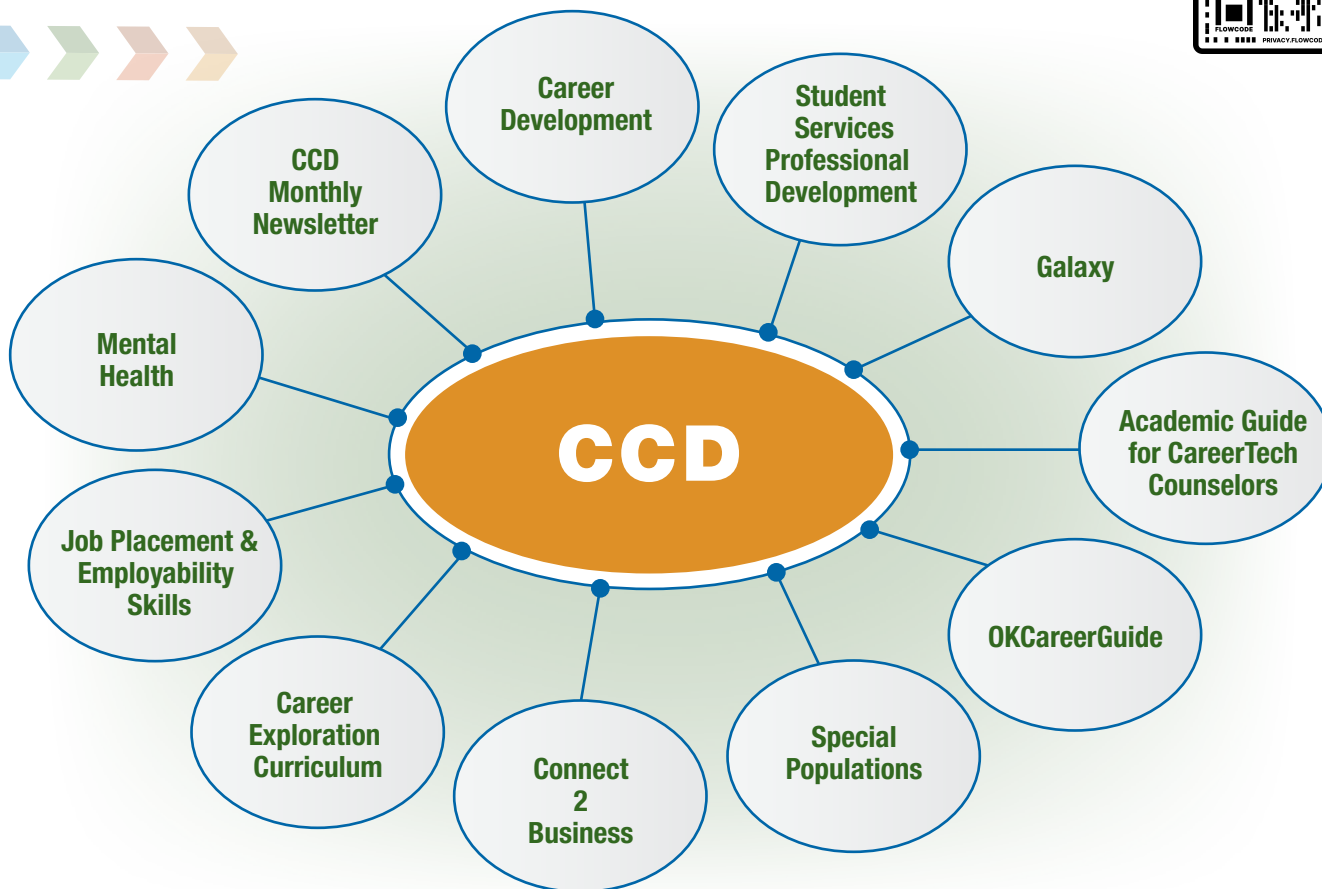
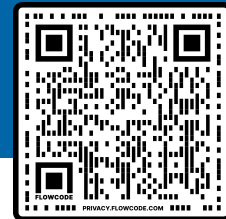


WELCOME TO COUNSELING AND CAREER DEVELOPMENT



PROFESSIONAL DEVELOPMENT WE PROVIDE:



SAMPLES OF RESOURCES

- WE OFFER:**
- Career Cluster Posters
 - Special Populations Resource Guide
 - English Learners - Strategies for Improving CareerTech Instruction
 - Documents on CareerTech and Students with Disabilities
 - ICAP Curriculum
 - OKCareerGuide YouTube Channel
 - Find the latest training videos on our YouTube channel.*

OKCAREER.TECH/CCD

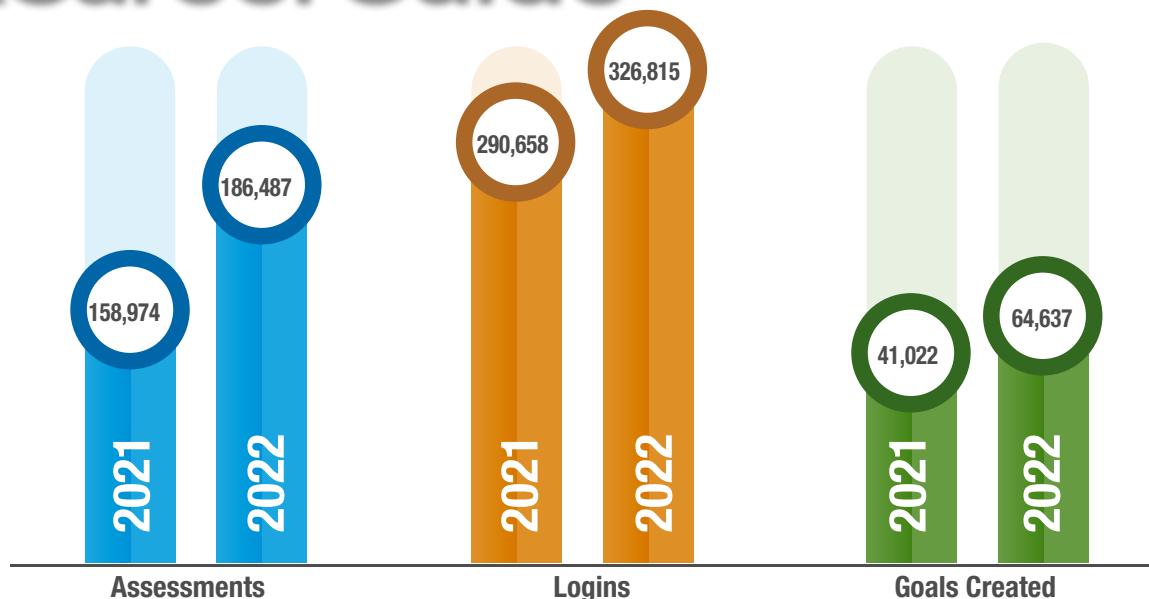
CALL US
405.743.5162

The Oklahoma Department of Career and Technology Education does not discriminate on the basis of race, color, religion, national origin, sex/gender, age, disability, or veteran status. Inquiries concerning application of this policy may be referred to ODCTE, Compliance Coordinator, 1500 West Seventh Avenue, Stillwater, OK 74074-4364, 1-800-522-5810 or (405) 377-2000. This publication is printed and issued by the Oklahoma Department of Career and Technology Education as authorized by 74 O.S. 2001, Sec. 3105, as amended. 300 copies were printed at the cost of \$218.00. 18827



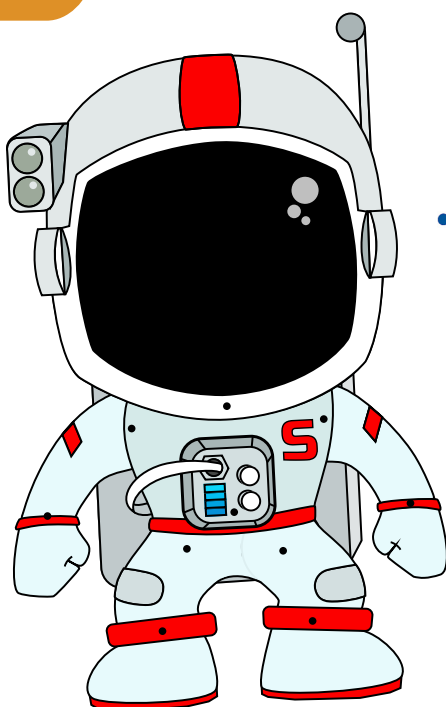
CCD Counseling and Career Development

TRAINING OPPORTUNITIES HERE



OKCareerGuide for 6th-12th grades is a powerful career readiness and post-secondary platform for middle and high school students to assist with career development and Individual Career and Academic Plans. The OKCareerGuide team is excited to announce the arrival of ICAP Oklahoma, a convenient way for students and educators to track ICAP progress inside OKCareerGuide.org! This easy-to-customize feature allows schools to specify exactly what items to monitor and report.

OKCareerGuide for Adults guides those preparing to enter the workforce, transitioning to another occupation or advancing in their careers. This comprehensive system gives tech center and college advisers, and workforce development professionals powerful tools to measure success, fulfill reporting requirements and offer individualized career advising.



Students will have a blast with Galaxy's interactive games, activities, and videos that help them uncover interests and get excited for the future. Galaxy was designed for elementary students, grades in pre-K through five, by career development and elementary education experts to capitalize on children's curiosity and provide early career awareness.