

CareerTech Performance Review

January 2024

A transparent view of the system that elevates skills-based education opportunities

- **Review of the systems approach to training a workforce**
- **Review of the funding performance of FY23**
- **Review of opportunities to impact more Oklahomans**



OKLAHOMA
CareerTech

FY23 General Appropriations

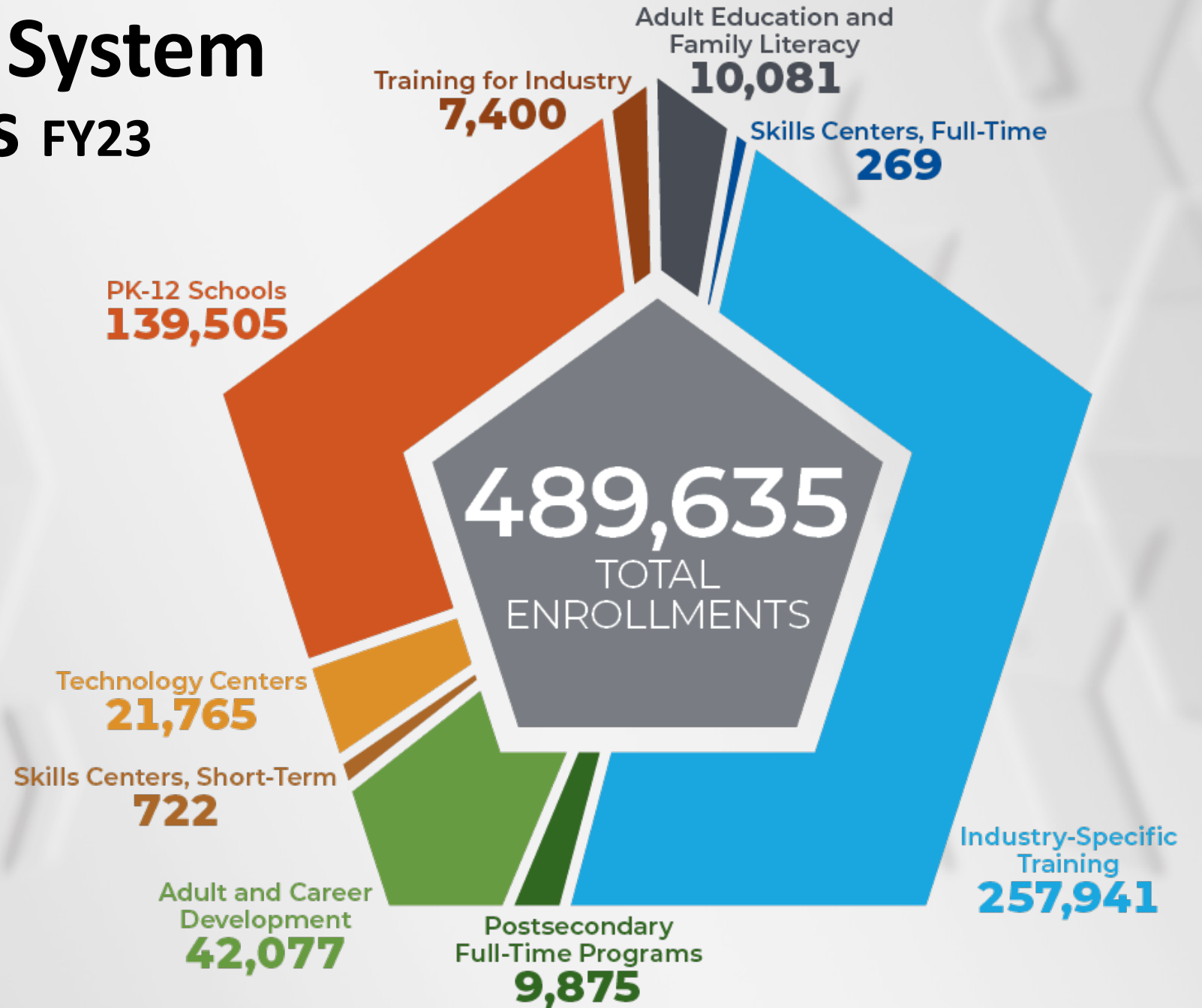
\$137,602,932



OKLAHOMA
CareerTech



CareerTech System Enrollments FY23



OKLAHOMA
CareerTech



Business and Industry

BUSINESSES SERVED

Total businesses served, duplicated in some categories

» 8,764



General Appropriation Expenditures for Business and Industry: \$6,206,475

- Created growth from 6,671 businesses to 8,764
- Equates to 3,258,764 hours served for training in the 307,418 enrollments



Skills Centers

991

SKILLS CENTERS
PROGRAM
COMPLETERS



Students
served,
short-term

722



Completed,
full-time

269



General Appropriation Expenditures for Skills Centers: \$5,148,833

- Beginning construction on the new facility at Vinita
- Maintains a **95%** placement rate



Adult Education and Family Literacy

Oklahomans are provided instruction annually through CareerTech's Adult Education and Family Literacy programs.



OKLAHOMA
CareerTech

General Appropriation Expenditures for Adult Education and Family Literacy: \$584,477

- **32** AEFL providers at **118** sites
- **10,081** total students served
- **6,812** students working on high school equivalency
- **2,219** correctional center students
- **193** English literacy/civics students



PK-12 Schools

CareerTech programs are available to students in fifth through 12th grades in Oklahoma's PK–12 schools.

- **32% (131,792)** of Oklahoma fifth–12th grade students were enrolled in CareerTech classes.
- **42% (86,414)** of Oklahoma ninth–12th grade students were enrolled in CareerTech classes.
- There were **131,792** secondary CareerTech enrollments (some students may take more than one offering).



OKLAHOMA
CareerTech





PK-12 Schools

TEACHERS IN COMPREHENSIVE SCHOOLS FY23



Agricultural Education

482
Teachers

29,192
Enrollments



Business and Information Technology Ed

245
Teachers

24,581
Enrollments



Family and Consumer Sciences Ed

372
Teachers

39,122
Enrollments



Health Careers Education

14
Teachers

822
Enrollments



Marketing Education

29
Teachers

2,605
Enrollments



Science, Tech, Engineering and Math

307
Teachers

41,405
Enrollments



Trade and Industrial Education

25
Teachers

1,778
Enrollments

General Appropriation Expenditures for PK-12 Program Assistance and Salary Supplement: \$19,624,499

- Record number of enrollments for the **second year in a row**



FCCLA





Technology Centers



ENROLLMENT BY CAREER CLUSTER FY23



Agriculture, Food and Natural Resources	101
Architecture and Construction	3,240
Arts, Audio/Video Technology and Communications	1,077
Business Management and Administration	1,295
Education and Training	128
Finance	228
Health Science	6,661
Hospitality and Tourism	852
Human Services	2,409
Information Technology	2,949
Law, Public Safety, Corrections and Security	778
Manufacturing	3,308
Marketing	289
Science, Technology, Engineering and Mathematics	3,934
Transportation, Distribution and Logistics	4,307
Energy and Power	84



31,640

**General Appropriation
Expenditures for Technology
Center Operational and Program
Support: \$89,746,729**

- Growth of **9.3%**
- Trained **72%** of LPNs for the State

FY24 General Appropriation Increase

\$22,603,636

Certified Teacher Salary Increase **\$9,948,597**

FBA **\$1,400,000**

Secondary Program Funding **\$10,041,578**

- Addition of 173.5 programs last year
- Six schools added programs that previously had no CTE offering

CDL Funding **\$1,213,461**

- Transitioning from 450 Class A to 900 annually

FY24 General Appropriation

\$160,206,568

FY25 General Appropriation Request



\$41,750,000

TOTAL \$201,956,568

Appropriations Request for FY25

Secure funding for the Oklahoma CareerTech system to meet the workforce education needs of our state and people.



NEED	AMOUNT
Flex Benefit Allowance	\$1,500,000
Health Careers Training	\$10,500,000
Construction Trades Training	\$8,100,000
Manufacturing Occupational Training	\$7,600,000
Additional Pathways Needed	\$10,800,000
Incarcerated Individual Training	\$750,000
Empower Oklahoma Program	\$2,000,000
Expansion Program	\$500,000
TOTAL	\$41,750,000

FY25 :: Increased General Appropriation Required to fund the Flex Benefit Allowance (FBA) for the Technology Centers

**Statutory Requirement (Title 70-26-104)*

\$1,500,000

per enrollment increase of...

Workforce Training

\$37,000,000

Health Careers

\$10,500,000

- Growth in 28 programs
- Additions of 19 programs

Construction Trades

\$8,100,000

- Growth in 21 programs
- Additions of 17 programs

Manufacturing

\$7,600,000

- Growth in 21 programs
- Additions of 17 programs

Additions of 37 other Programs

\$10,800,000

Agriculture ... Arts, Audio/Video Tech & Communication ...
Business, Management and Administration ... Education ...
Energy ... Hospitality and Tourism ... IT ... Public Safety ... STEM



Adds
Capacity for
6,400
Full-Time
Students



Incarcerated Individual Training **\$750,000**

Transition Services

\$300,000

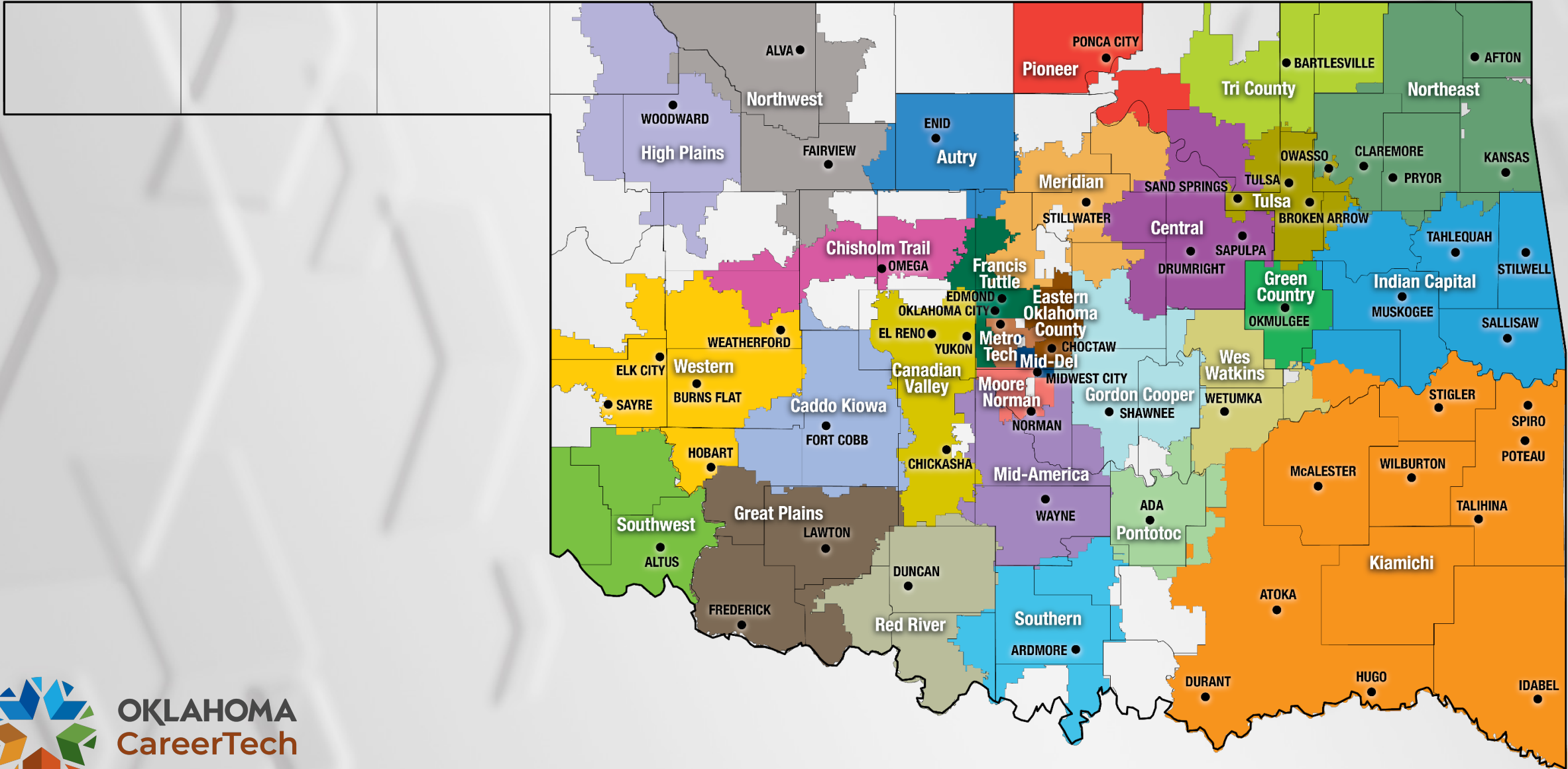
Construction Trades

\$450,000

Empower Oklahoma by CareerTech **\$2,000,000**

To braid services of TANF, SNAP E&T, Adult Education and CTE Training

Career and Technology Expansion **\$500,000**





Summary

**FY24 General
Appropriation**

\$160,206,568

**FY25 Appropriation
Request**

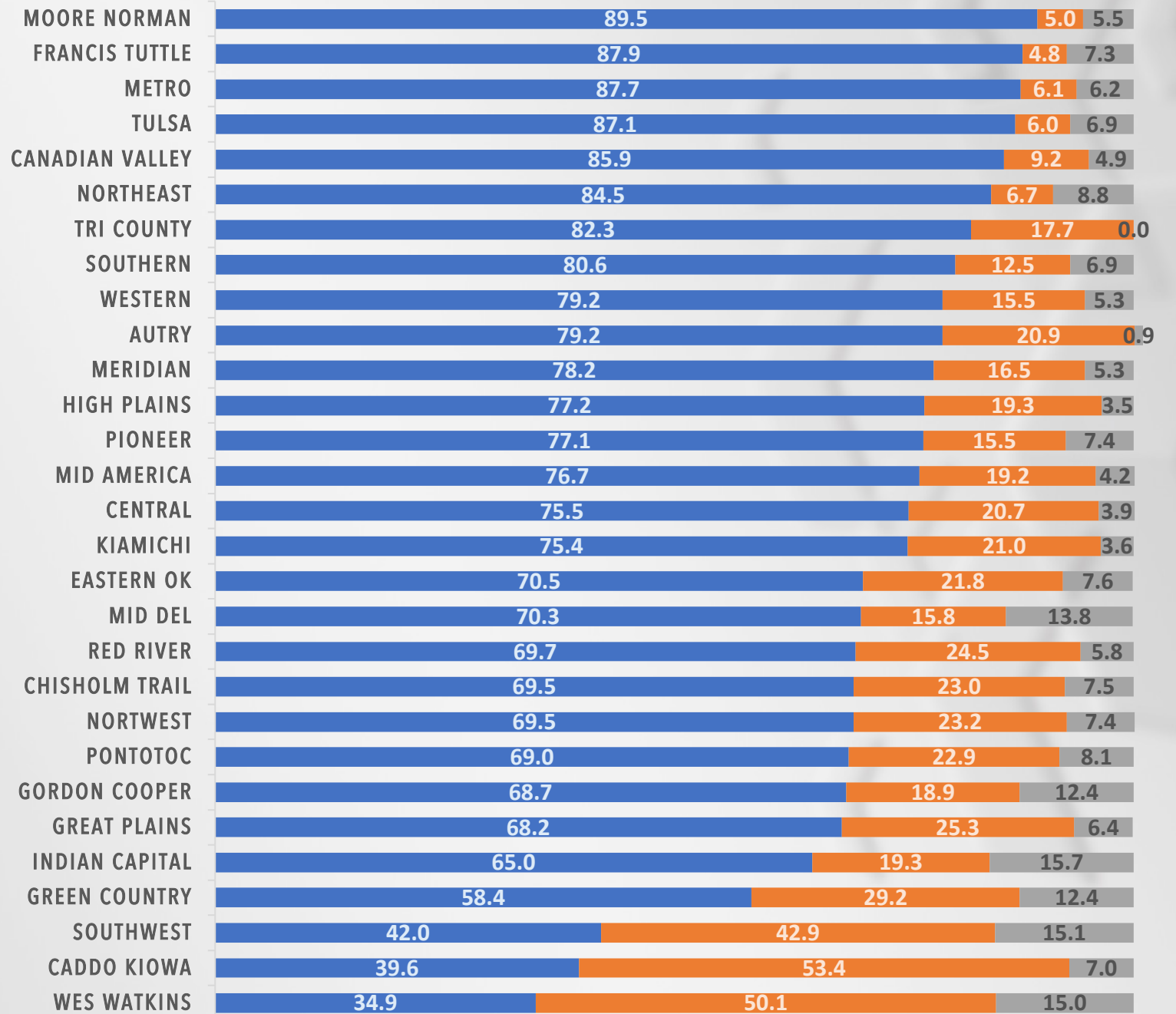
\$41,750,000

**FY25 General
Appropriation Total**

\$201,956,568

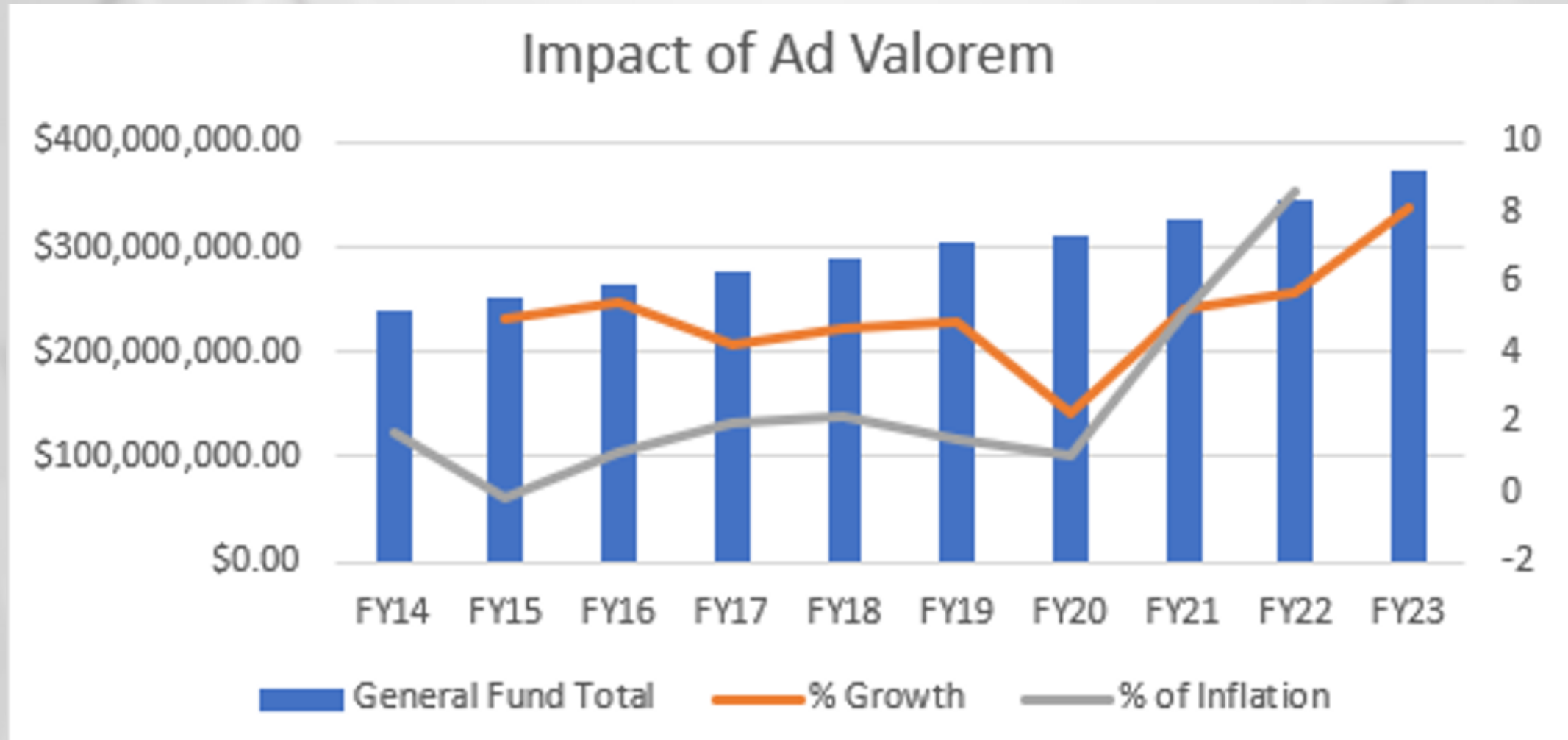


Funding Sources by Technology Center

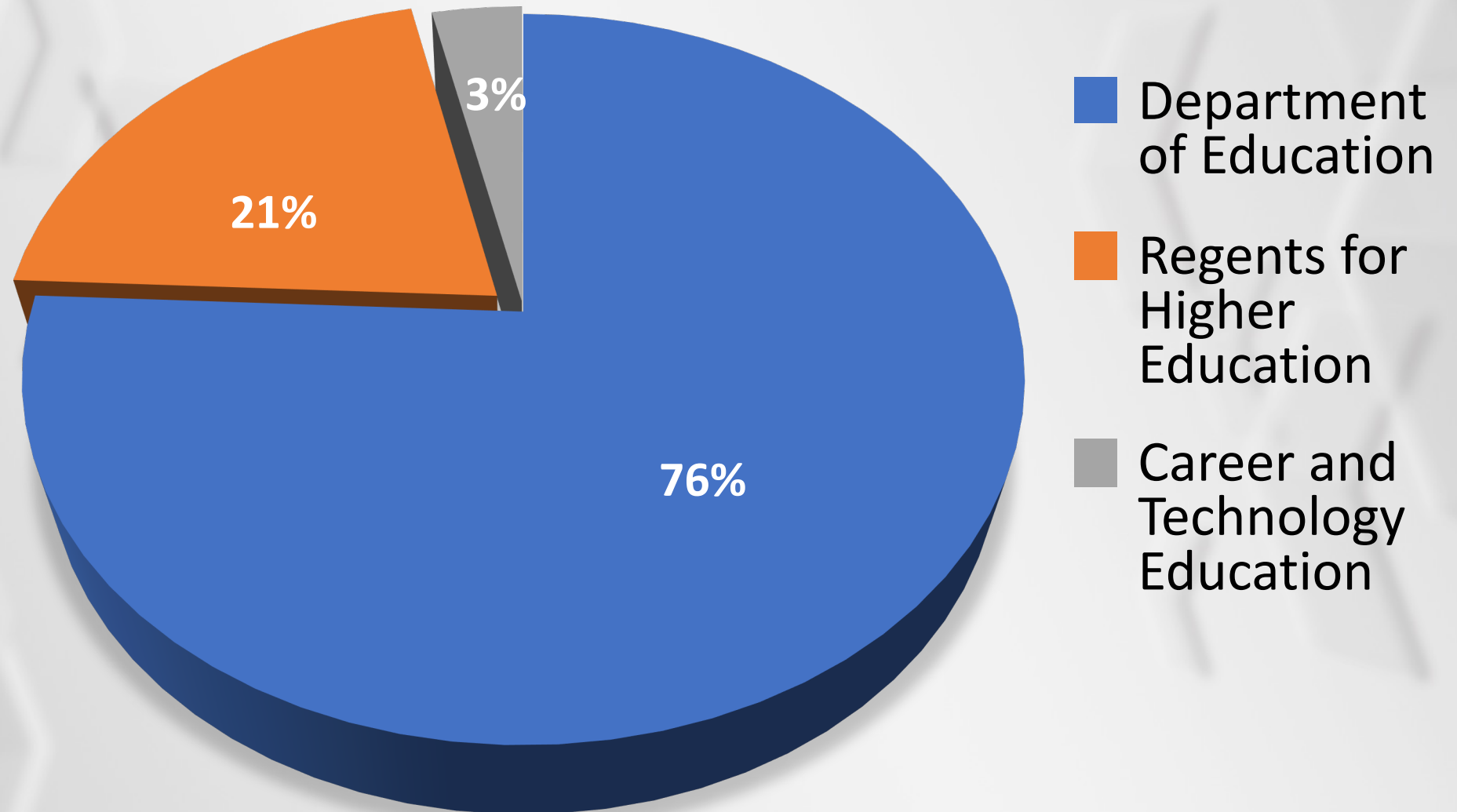


OKLAHOMA
CareerTech

Ad Valorem Lacks Ability for Growth in Technology Centers



CareerTech Appropriations Compared to Other Educational Entities



Thank you



OKLAHOMA
CareerTech