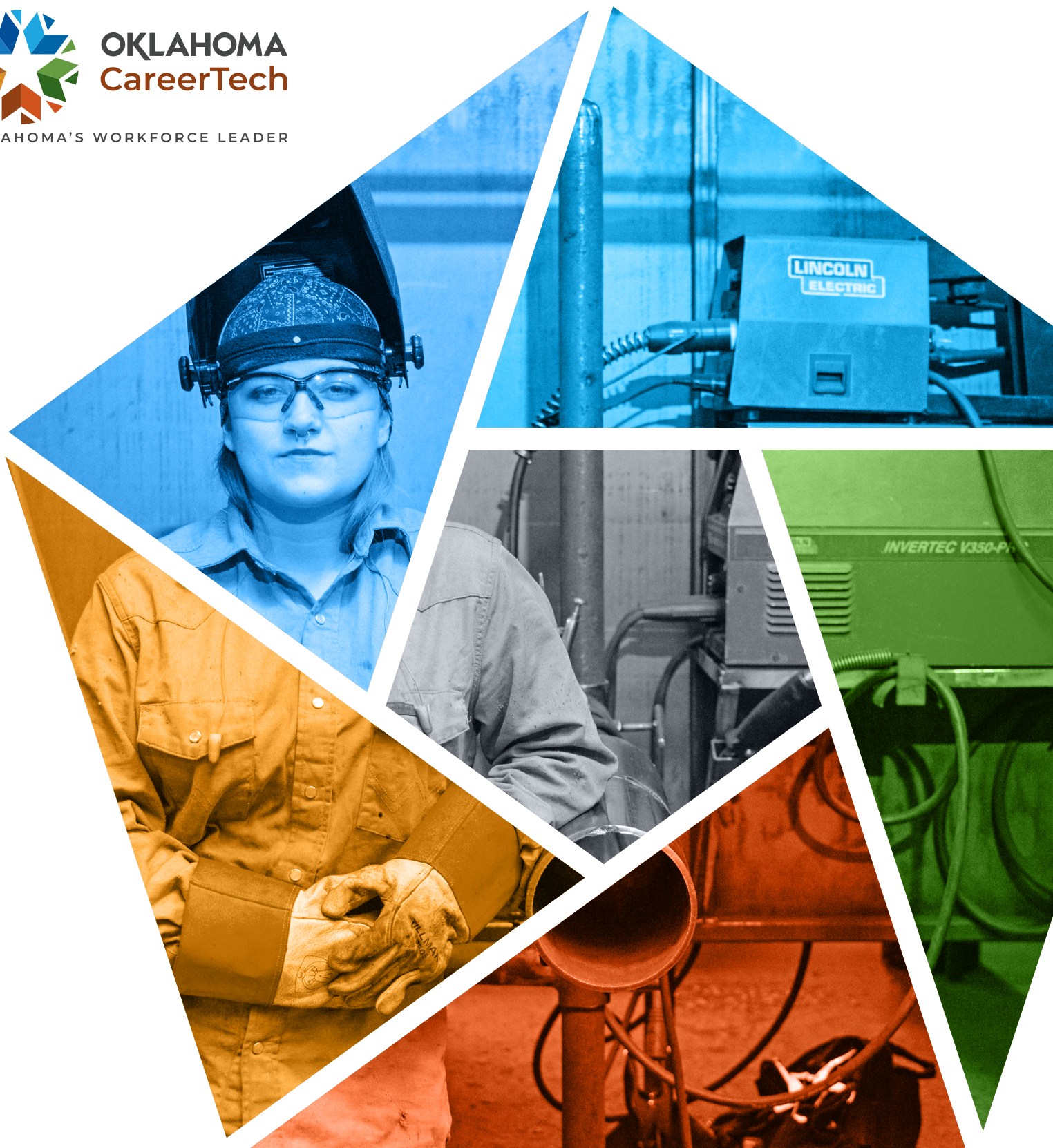




OKLAHOMA
CareerTech

OKLAHOMA'S WORKFORCE LEADER



ANNUAL REPORT

2025



The Oklahoma Department of Career and Technology Education is focused on developing a world-class workforce through educational experiences offered by a network of PK-12 school districts, technology center districts, skills center sites and adult education and family literacy providers.

CareerTech's goal is to improve Oklahoma's economy by providing individuals with training and skills necessary to succeed in the workplace and providing companies the workforce they need to compete globally.

To meet the state's workforce demands, CareerTech leverages business/educational partnerships to enhance career awareness and increase educational attainment for all Oklahomans.

Executive Summary



OUR VISION

Securing Oklahoma's future by developing a world-class workforce.



OUR MISSION

Preparing Oklahomans to succeed in the workplace, in education and in life.



OUR GOALS

Educational attainment



Career awareness and planning



Business/educational partnerships



Agency operations and field support



OUR VALUES

We believe in...

High-quality educational experiences



Data-informed decisions



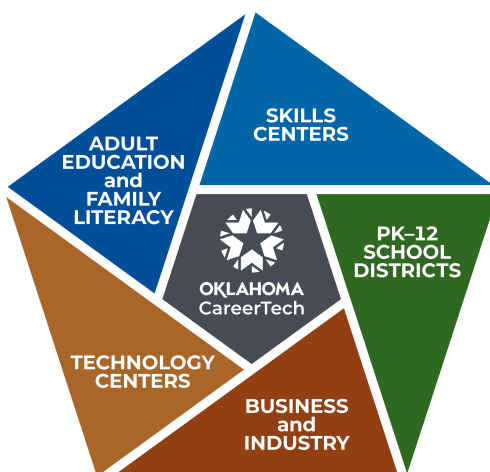
Service to our customers and stakeholders



Innovation, flexibility and accountability



Equal access for Oklahomans



CAREERTECH SYSTEM ENROLLMENTS FY25

151,774
PK-12 Schools

21,186
Secondary Full-Time Programs*

3,476
Secondary Occupational
Course Programs*

274,089
Industry-Specific Training

41,046
Adult and Career Development

11,089
Adult Education and Family Literacy

9,608
Adult Full-Time Programs

3,258
Training for Industry

1,401
Skills Centers, Short-Term

690
Skills Centers, Full-Time

135
Skills Centers, Partner Programs

*earning
postsecondary
credit

517,752 TOTAL
ENROLLMENTS



System Overview FY25

In FY24, Oklahoma CareerTech students earned **34,771** industry certifications, while education students earned **38,290** diplomas. The difference came at a striking cost.

CareerTech students carried an average debt of just **\$30.85** per certification. By comparison, the average debt for a higher education diploma was **\$16,638**.

The state's return on investment tells the same story. Oklahoma invested **\$5,938** for each CareerTech certification, compared with **\$21,830** for each higher education diploma.

Tuition costs also highlight the gap. CareerTech students paid a combined **\$32.9 million**, while higher education students paid more than **\$1.5 billion**.

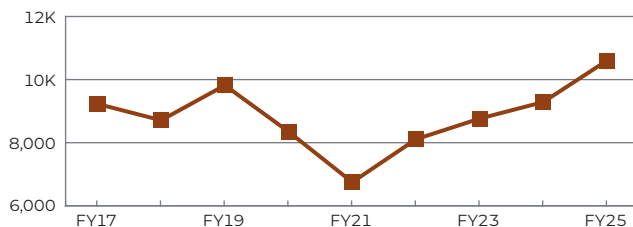


10,604 BUSINESSES SERVED
Total businesses served, duplicated between categories

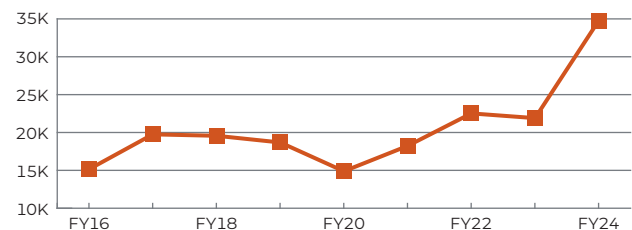


Business & Industry FY25

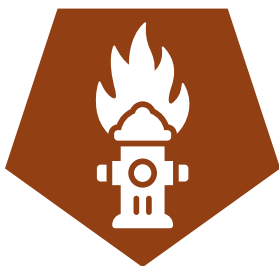
BUSINESSES SERVED
(May be duplicated between categories)



INDUSTRY-ENDORSED CERTIFICATIONS



BUSINESS AND INDUSTRY ENROLLMENTS FY25



Firefighter Training
2,268



Training for Industry Program
3,258



Adult and Career Development
41,046

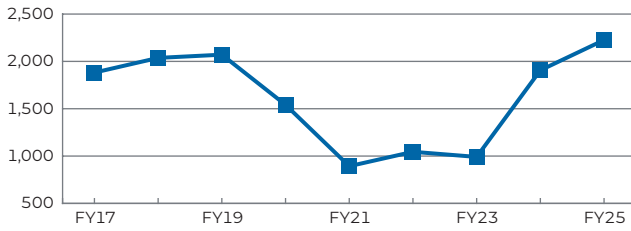


Industry Specific
83,152



Safety
188,669

SKILLS CENTERS ENROLLMENTS



SKILLS CENTERS SHORT-TERM AND FULL-TIME PROGRAMS FY25

Program enrollments
2,226

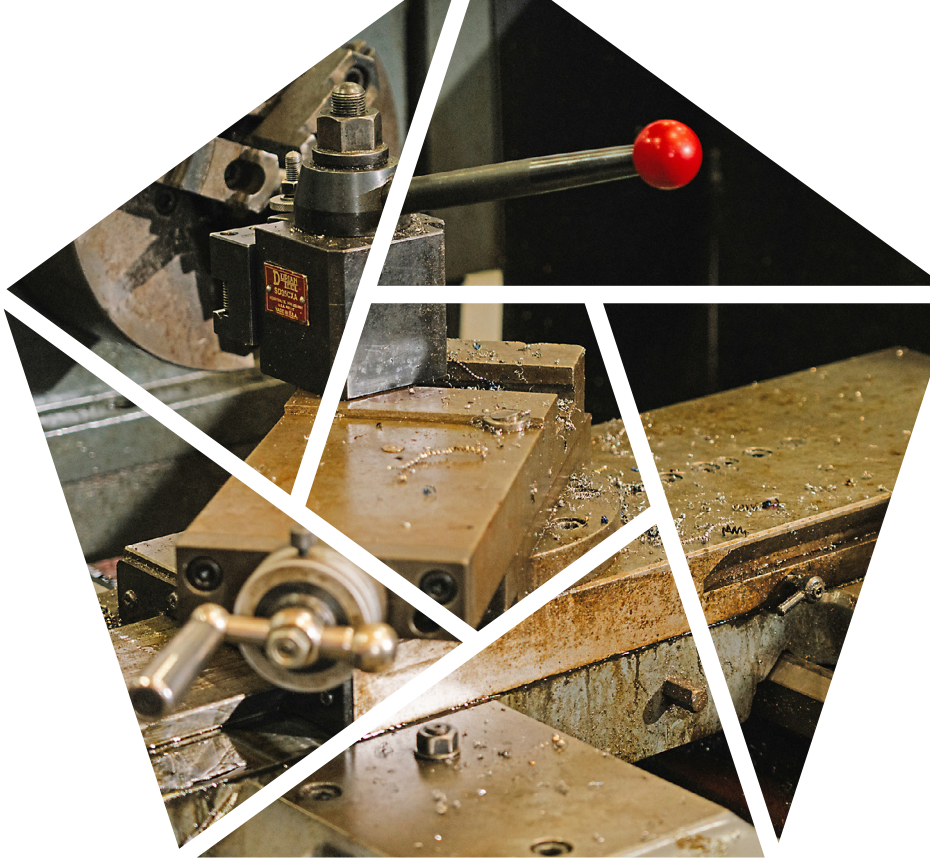
Program completers
1,286



Average hourly wage
\$34.92



Skills Centers Dropout Recovery Adult Education & Family Literacy



ADULT EDUCATION & FAMILY LITERACY

Oklahomans are provided instruction annually through CareerTech's Adult Education and Family Literacy programs.

49 AEFL providers at 125 sites

5,474 students working on high school equivalency

2,401 correctional center students

199 English literacy/civics students

AEFL ENROLLMENT

FY17	17,989
FY18	17,468
FY19	12,647
FY20	10,766
FY21	8,304
FY22	8,925
FY23	10,081
FY24	11,015
FY25	11,089



DROPOUT RECOVERY

CareerTech's dropout recovery program helps students who drop out of high school earn their diplomas and gain skills to enter the workforce.

521 students

230 earned high school diplomas

126 obtained employment

8 entered the military

79 enrolled in postsecondary education



PK-12 Schools FY25

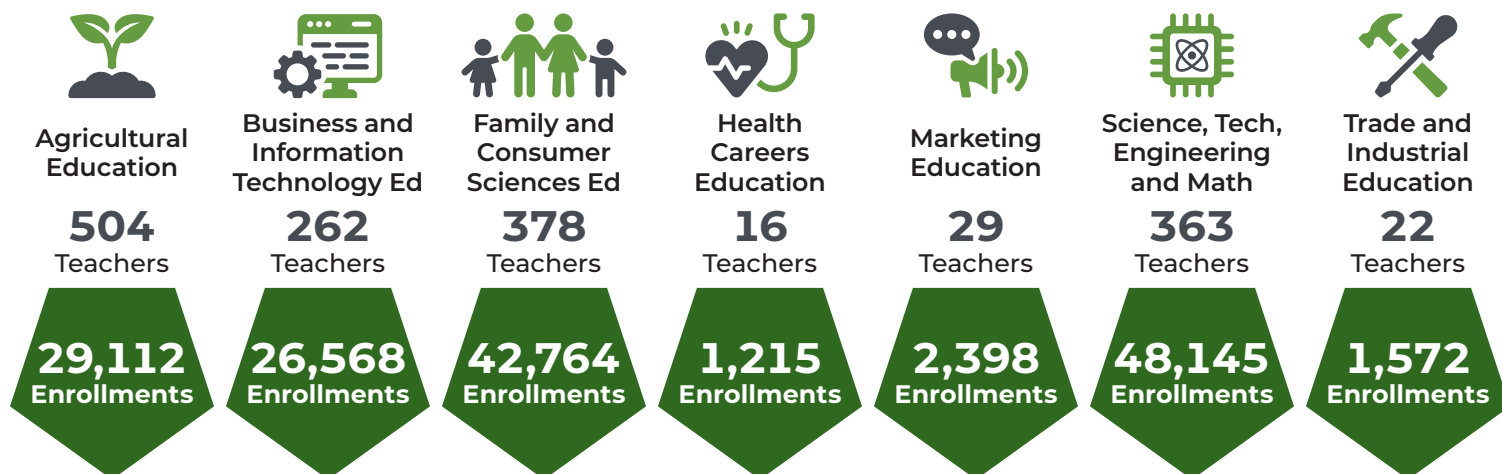
CareerTech programs are available to students in fifth through 12th grades in Oklahoma's PK-12 schools.

There were **143,113** secondary CareerTech enrollments (some students may take more than one offering).

COMPREHENSIVE SCHOOL SUMMARY

	Unduplicated Enrollments	Statewide Enrollment	Pct. Served
FY17	122,196	326,379	37.44%
FY18	124,308	337,696	36.81%
FY19	121,159	343,592	35.26%
FY20	128,436	349,995	36.70%
FY21	116,079	403,996	28.73%
FY22	127,875	406,357	31.47%
FY23	131,792	408,421	32.27%
FY24	138,217	410,159	33.70%
FY25	143,113	412,240	34.72%

TEACHERS IN COMPREHENSIVE SCHOOLS FY25



ENROLLMENT BREAKDOWN BY GRADE (unduplicated)

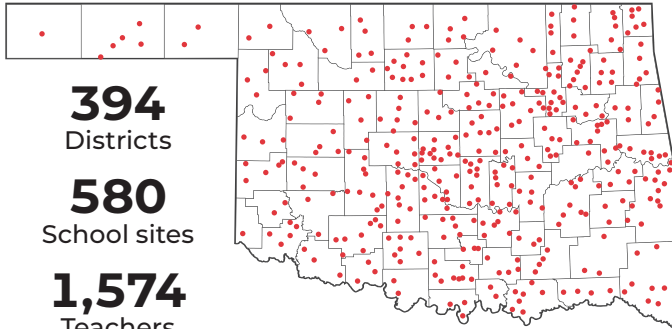
	Grade 5	Grade 6	Grade 7	Grade 8	Grade 9	Grade 10	Grade 11	Grade 12
FY21	1,226	9,555	11,497	16,686	17,660	17,199	20,863	21,393
FY22	1,635	10,591	13,453	18,616	21,093	19,479	21,054	21,954
FY23	1,633	10,939	13,322	19,484	20,539	20,576	23,020	22,279
FY24	2,007	10,568	13,496	19,339	21,691	21,613	25,285	24,218
FY25	3,710	12,996	14,492	19,967	19,646	21,003	25,586	25,713

OFFERINGS IN PK-12 SCHOOLS

Grades 5-12

- Provide a hands-on learning environment
- Integrate rigorous academics
- Provide opportunities to explore and experience potential careers
- Provide knowledge and skill development in multiple career pathways

PK-12 SCHOOL DISTRICTS



CTSO CareerTech Student Organizations

In FY25, **122,929** students learned important leadership skills as members of seven co-curricular CareerTech Student Organizations.

TSA
34,227

FFA
29,507

FCCLA
24,209

SkillsUSA
18,270

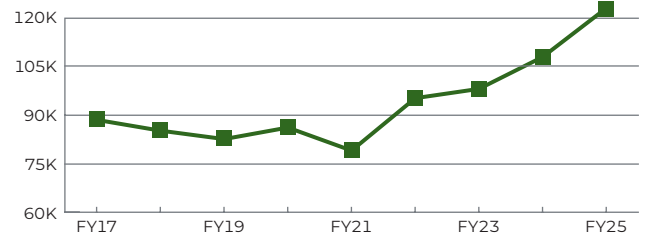
hosa
7,772

bpa
7,389

DECA
1,555



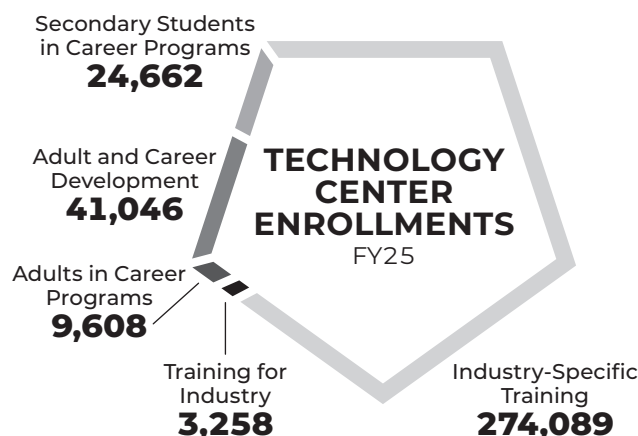
TOTAL CTSO MEMBERSHIP





In FY25, technology center districts operated on **62** campuses across the state, making CareerTech training and services accessible to most Oklahomans.

High school student enrollments in technology centers totaled **24,662**. Adult enrollments in career programs, industry-specific training, adult and career development and the Training for Industry Program were **328,001**.



Technology Centers FY25

TECHNOLOGY CENTER ENROLLMENTS

	Full-time Enrollments	Industry-Specific Training	Total Secondary Enrollments	Adult and Career Development	Training for Industry	Total Technology Center Enrollments
FY17	10,508	274,032	20,088	54,700	4,111	363,439
FY18	10,262	303,602	20,971	60,603	2,077	397,515
FY19	9,768	306,580	21,649	62,305	8,061	408,363
FY20	9,653	226,505	22,272	47,825	4,030	310,285
FY21	9,041	202,386	20,606	58,194	4,966	295,193
FY22	9,586	209,857	20,168	49,672	9,392	298,675
FY23	9,875	257,941	21,765	42,077	7,400	339,058
FY24	9,978	278,938	23,144	47,967	4,671	364,698
FY25	9,608	274,089	24,662	41,046	3,258	352,663



Thirty-five percent (143,113) of Oklahoma fifth-grade through 12th-grade students were enrolled in CareerTech classes.



Forty-four percent (91,948) of Oklahoma ninth-grade through 12th-grade students were enrolled in CareerTech classes.

TECHNOLOGY CENTER ENROLLMENT BY CAREER CLUSTER

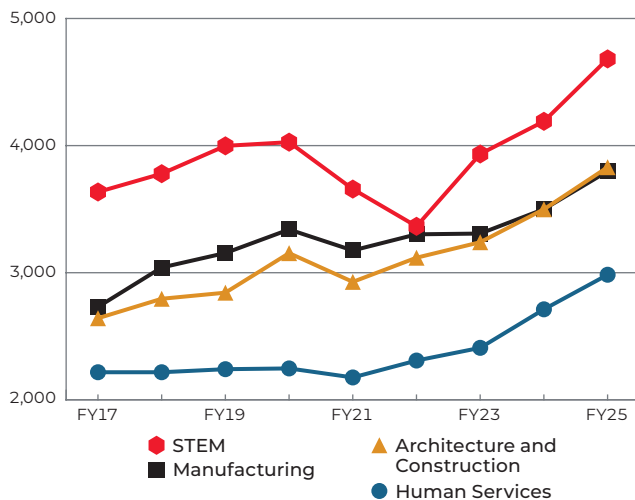
	FY25	From FY24	From FY17
Agriculture, Food and Natural Resources	77	↓	↓
Architecture and Construction	3,830	↑	↑
Arts, Audio/Video Technology and Communications	974	↓	↓
Business Management and Administration	1,120	↓	↓
Education and Training	156	↓	↑
Finance	175	↓	↓
Health Science	7,124	↑	↑
Hospitality and Tourism	888	↑	↓
Human Services	2,984	↑	↑
Information Technology	3,089	↓	↑
Law, Public Safety, Corrections and Security	816	↑	↑
Manufacturing	3,790	↑	↑
Marketing	279	↑	↑
Science, Technology, Engineering and Mathematics	4,682	↑	↑
Transportation, Distribution and Logistics	4,331	↓	↓
Energy and Power	121	↑	↑*
GRAND TOTAL	34,436	↑	↑

*Change from FY22, when Energy and Power was established as a career cluster



Oklahoma CareerTech programs had a **94%** positive placement rate in FY24, which means nearly all CareerTech graduates found employment, entered the military or continued their education.

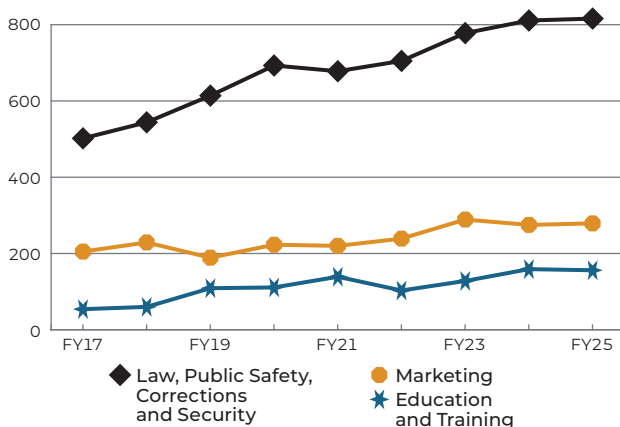
CAREER CLUSTER ENROLLMENT



CAREER CLUSTER ENROLLMENT

	Science, Technology, Engineering and Math	Architecture and Construction	Manufacturing	Human Services
FY17	3,635	2,642	2,731	2,217
FY18	3,779	2,795	3,041	2,217
FY19	3,998	2,843	3,155	2,241
FY20	4,027	3,154	3,340	2,247
FY21	3,658	2,928	3,175	2,176
FY22	3,365	3,118	3,302	2,309
FY23	3,934	3,240	3,308	2,409
FY24	4,191	3,499	3,500	2,712
FY25	4,682	3,830	3,790	2,984

CAREER CLUSTER ENROLLMENT



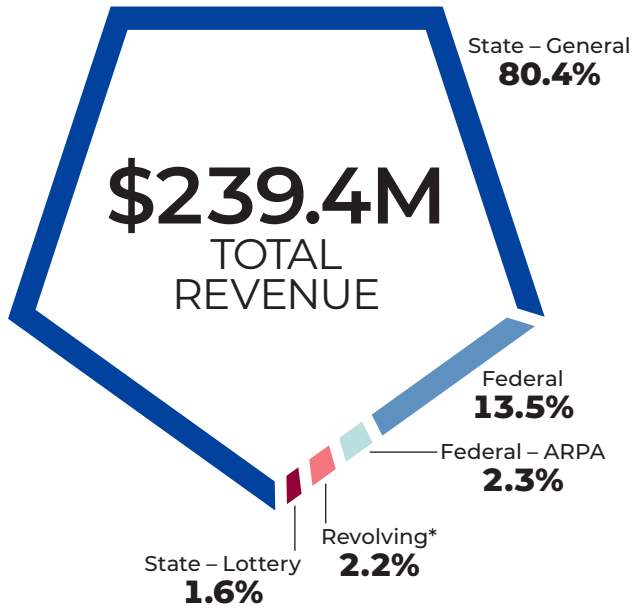
CAREER CLUSTER ENROLLMENT

	Education and Training	Law, Public Safety, Corrections and Security	Marketing
FY17	54	502	205
FY18	60	544	229
FY19	109	614	189
FY20	111	693	223
FY21	139	678	220
FY22	103	705	239
FY23	128	778	289
FY24	159	811	275
FY25	156	816	279



Fiscal Overview

FY25



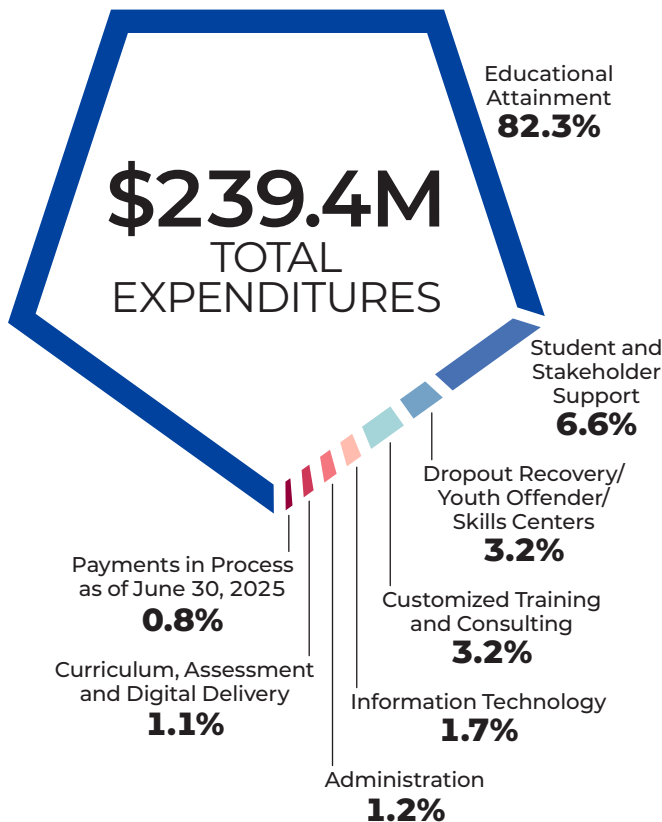
AGENCY REVENUE

Sources of Revenue from All Funding Sources (FY25 Actual)

State – General	\$192,491,505	80.4%
Federal	32,431,727	13.5%
Federal – ARPA	5,425,297	2.3%
Revolving*	5,247,921	2.2%
State – Lottery	3,836,369	1.6%

TOTAL \$239,432,819

* Includes Agency Special Account

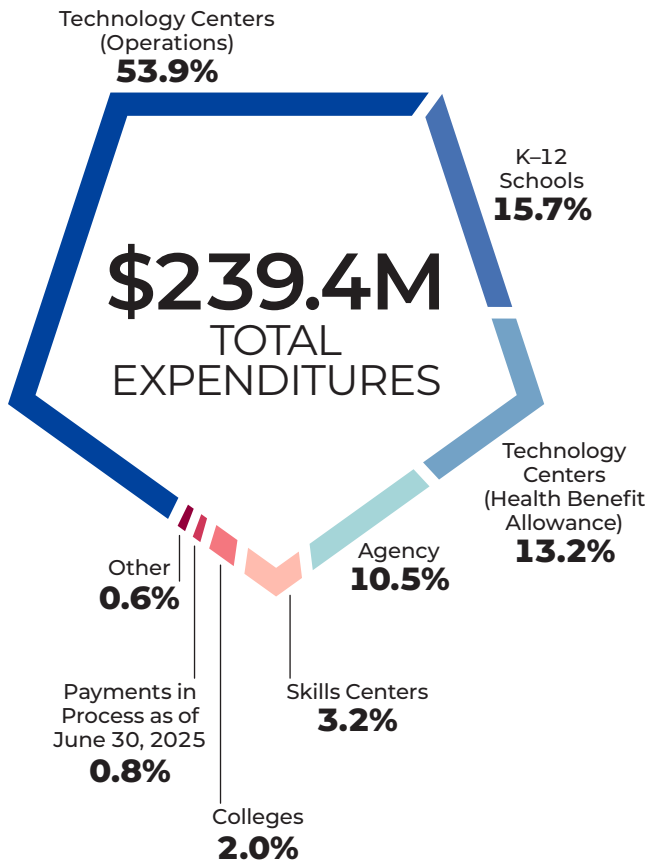


AGENCY EXPENDITURES

Expenditures by Activity from All Funding Sources (FY25 Actual)

Educational Attainment	\$196,996,740	82.3%
Student and Stakeholder Support	15,684,468	6.6%
Dropout Recovery/ Youth Offender/ Skills Centers	7,732,792	3.2%
Customized Training and Consulting	7,576,670	3.2%
Information Technology	4,068,990	1.7%
Administration	2,853,962	1.2%
Curriculum, Assessment and Digital Delivery	2,612,592	1.1%
Payments in Process as of June 30, 2025	1,906,606	0.8%

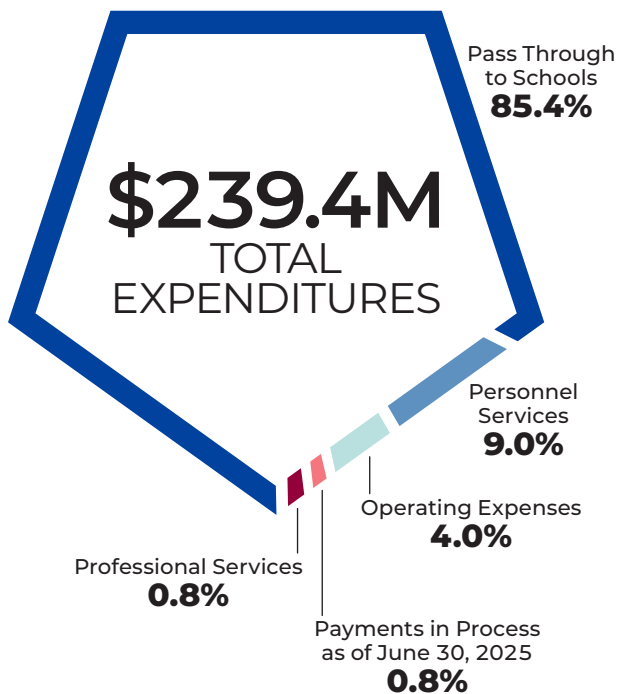
TOTAL \$239,432,819



AGENCY EXPENDITURES

Expenditures by Service Delivery from All Funding Sources
(FY25 Actual)

Technology Centers (Operations)	\$129,149,791	53.9%
K-12 Schools	37,674,163	15.7%
Technology Centers (Health Benefit Allowance)	31,632,354	13.2%
Agency	25,224,834	10.5%
Skills Centers	7,732,792	3.2%
Colleges	4,731,603	2.0%
Payments in Process as of June 30, 2025	1,906,606	0.8%
Other	1,380,677	0.6%
TOTAL	\$239,432,819	



AGENCY EXPENDITURES

Expenditures by Category from All Funding Sources
(FY25 Actual)

Pass Through to Schools	\$204,568,587	85.4%
Personnel Services	21,535,885	9.0%
Operating Expenses	9,551,887	4.0%
Payments in Process as of June 30, 2025	1,906,606	0.8%
Professional Services	1,869,853	0.8%
TOTAL	\$239,432,819	



Oklahoma students visit the state Capitol in Oklahoma City as state officers of the seven co-curricular CareerTech student organizations: Business Professionals of America; DECA; Family, Career and Community Leaders of America; FFA; HOSA; SkillsUSA; and Technology Student Association.



**OKLAHOMA
CareerTech**

OKLAHOMA'S WORKFORCE LEADER

» **Oklahoma Department of Career and Technology Education**
1500 West Seventh Avenue
Stillwater, OK 74074-4398

» **okcareertech.org**
 » **405-377-2000**
 » **800-522-5810**